



Andes
GLOBAL TRADING
 QUALITY | INTEGRITY | TRUST



**SOUTH FLORIDA
 BUSINESS JOURNAL**



**Top 50 Private Companies Fastest Growing
 Private Companies 2016 & 2017**

Entrepreneurial awards



NEWSLETTER
 October 16/2017

Summary	1
Pork Statistics	2
Pork Price Forecasts	3-7
Beef Statistics	8
Beef Price Forecasts	9-12
Chicken Statistics	13-14
Chicken Forecasts	15-17
Turkey Statistics	18
Turkey Forecasts	19-20
Exports	21-24
Mexico Statistics	25-27
Global Pork Prices	28

Hogs / Pork

- Hog slaughter has averaged over 2.5 million head for each of the last three weeks, an all time record high
- Slaughter for the week was up 9.2% compared to a year ago, when a hurricane in North Carolina temporarily disrupted operations
- Higher pork prices with higher production is the clearest evidence yet of very robust pork demand
- The pork cutout last week was \$73.84/cwt, 1.5% higher than the previous week and 1.4% higher than a year ago
- Very strong ham demand is the primary reason for the cutout gains, with the ham primal up as much as 26% y/y
- August US pork exports were steady vs. last year but Steiner forecasts September up 5% and October up 7.5%

Broiler / Chicken

- Broiler egg sets in the last four weeks have averaged 3.8% above last year while the number of chicks placed in broiler houses is up 2.9% from a year ago
- Industry profitability remains intact but tighter margins are expected in the next six months
- Prices for broilers parts are down across the board as Hurricane's Harvey, Irma and Maria significantly impacted demand in the Southeastern US and in the Caribbean
- Prices for broiler wings have been mostly impacted by the hurricane impact on Florida
- Low feed costs continue to support expansion in the broiler industry, with USDA raising its corn yield and corn production estimates for 2017-18

Cattle / Beef

- CME Fed Cattle futures have gained over 9% since late August on higher than expected wholesale beef prices
- US beef export volume in August was up 14.6% from a year ago as shipments to Japan jumped 41% and shipments to Mexico were up 8% vs. previous year
- Beef imports were 8.8% higher in August thanks to higher imports from Australia (+15%), New Zealand (+19%) and Mexico (+13%)
- Retail beef features in late September/early October helped support wholesale beef prices but now the beef retail feature index is down 18% vs. year ago
- Steer carcass weights have been trending lower, supporting prices for 50CL beef trimmings

Turkey / Other Poultry

- US turkey exports in August were 19,985 MT (product wt.) 9.1% lower than a year ago.
- Mexico remains the top market for US turkey meat, accounting for 58.6% of all US turkey exports.
- US turkey meat exports to Mexico in August were 11,718 MT, down 5% from a year ago.
- US turkey meat markets remain well supplied at this time and turkey prices have been steady to lower in the last three months
- USDA reported that US turkey poult placements in August were 24.0 million head, 2.4% higher than last year and the highest monthly placement since July 2016

Pork Market - Supply Situation & Outlook

Weekly Pork Production Statistics

Source: USDA

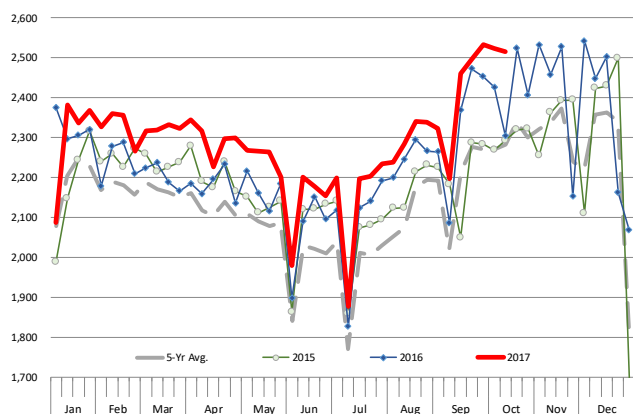
		Slaughter (1000 hd)	% CH.	Dressed Wt LBS	% CH.	Production (Million lbs)	% CH.
Year Ago	15-Oct-16	2,305		211.0		485.0	
This Week	14-Oct-17	2,516	9.2%	211.0	0.0%	529.9	9.3%
Last Week	7-Oct-17	2,524		211.0		531.9	
This Week	14-Oct-17	2,516	-0.3%	211.0	0.0%	529.9	-0.4%
YTD Last Year	15-Oct-16	91,039		211.3		19,218	
YTD This Year	14-Oct-17	93,726	3.0%	210.4	-0.4%	19,718	2.6%

Quarterly History + Forecasts

Q1 2016	29,262		212.9		6,230	
Q2 2016	28,116		212.1		5,963	
Q3 2016	29,323		208.0		6,100	
Q4 2016	31,539		210.8		6,648	
Annual	118,240	Y/Y % CH.	211.0	Y/Y % CH.	24,941	Y/Y % CH.
Q1 2017	30,176	3.1%	212.4	-0.2%	6,409	2.9%
Q2 2017	29,163	3.7%	210.4	-0.8%	6,137	2.9%
Q3 2017	30,027	2.4%	207.0	-0.5%	6,216	1.9%
Q4 2017	32,674	3.6%	211.0	0.1%	6,894	3.7%
Annual	122,040	3.2%	210.2	-0.4%	25,656	2.9%
Q1 2018	30,840	2.2%	213.0	0.3%	6,569	2.5%
Q2 2018	29,746	2.0%	211.0	0.3%	6,276	2.3%
Q3 2018	30,717	2.3%	208.0	0.5%	6,389	2.8%
Q4 2018	33,948	3.9%	211.0	0.0%	7,163	3.9%
Annual	125,252	2.6%	210.8	0.3%	26,398	2.9%

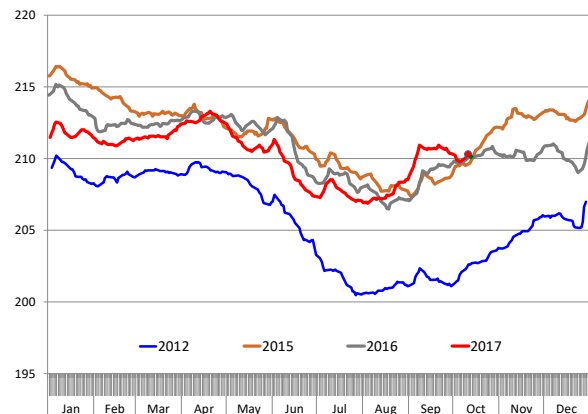
WEEKLY HOG SLAUGHTER, '000 HEAD

Source: USDA

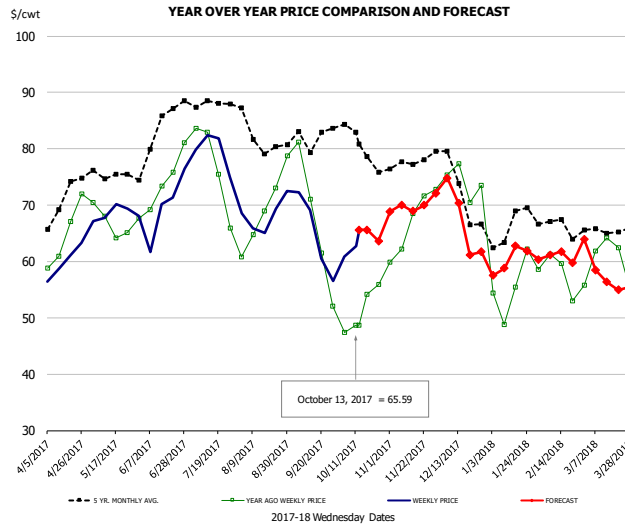


Barrow/Gilt Dressed Carcass Weights, 5-day Moving Avg. - All hogs

Based on Daily MPR Report, LM_HG201. Data through Sep. 29, 2017



Ham, 23-27# Trmd Selected Ham, FOB Plant, USDA

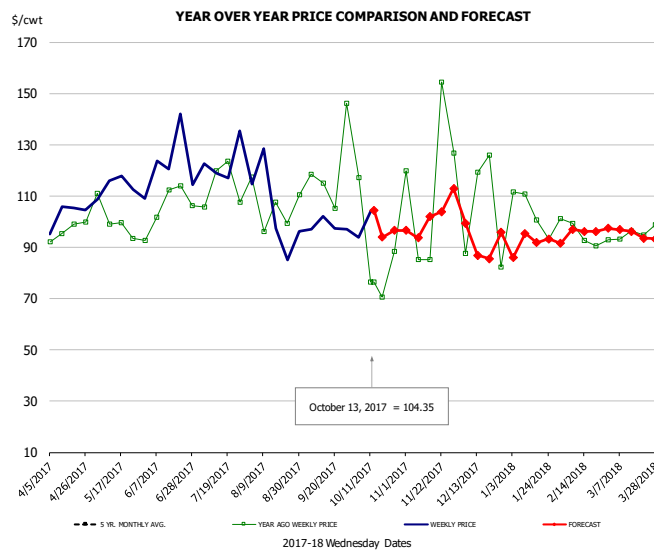


PRICE HISTORY AND FORECAST

- DOLLARS PER CWT -

	5-YR. AVG	YR. AGO	CURRENT	FORECAST	% CH.
Apr	69.05	64.47	59.06		-8.4%
May	74.76	66.22	67.94		2.6%
Jun	80.26	71.81	66.60		-7.3%
Jul	87.20	74.86	78.59		5.0%
Aug	82.85	67.08	67.33		0.4%
Sep	79.59	63.56	63.92		0.6%
4-Oct		47.43	60.83		28.3%
13-Oct		48.67	65.59		34.8%
25-Oct		55.91		63.64	13.8%
Oct	78.47	50.47		66.00	30.8%
Nov	77.11	67.02		70.00	4.4%
Dec	72.70	72.33		67.00	-7.4%
Jan	64.72	54.21		60.00	10.7%
Feb	66.71	57.82		61.00	5.5%
Mar	64.82	60.05		57.00	-5.1%

Ham, Inner Shank, FOB Plant, USDA

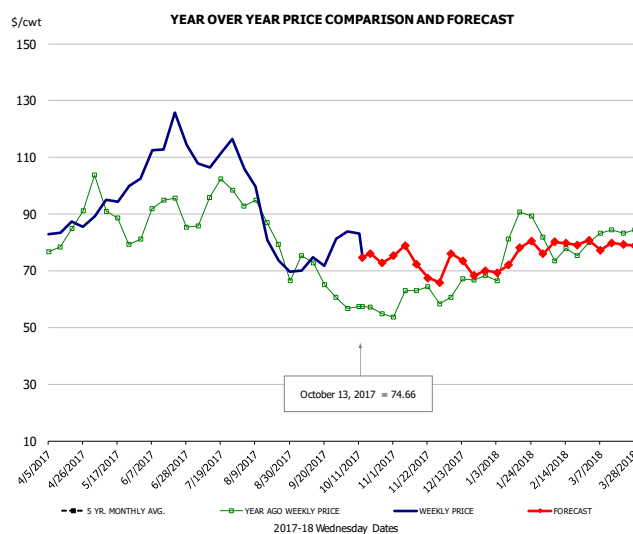


PRICE HISTORY AND FORECAST

- DOLLARS PER CWT -

	5-YR. AVG	YR. AGO	CURRENT	FORECAST	% CH.
Apr		95.62	101.29		5.9%
May		98.06	111.79		14.0%
Jun		105.51	118.98		12.8%
Jul		116.42	120.57		3.6%
Aug		101.34	99.62		-1.7%
Sep		109.30	99.43		-9.0%
4-Oct		117.06	93.90		-19.8%
13-Oct		76.48	104.35		36.4%
25-Oct		76.48		96.56	26.3%
Oct	104.95			95.00	-9.5%
Nov	107.42			99.00	-7.8%
Dec	119.91			95.00	-20.8%
Jan	95.39	111.23		93.00	-16.4%
Feb	96.36	97.40		96.00	-1.4%
Mar	97.05	97.32		96.00	-1.4%

Ham, Outer Shank, FOB Plant, USDA

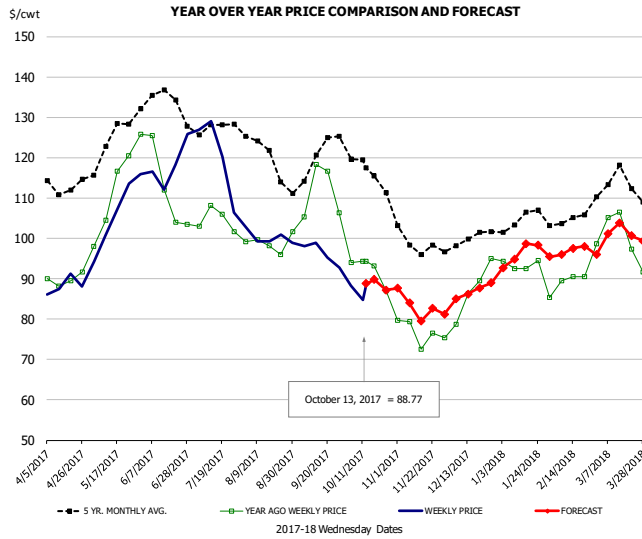


PRICE HISTORY AND FORECAST

- DOLLARS PER CWT -

	5-YR. AVG	YR. AGO	CURRENT	FORECAST	% CH.
Apr		81.69	84.27		3.2%
May		90.96	95.41		4.9%
Jun		90.75	113.11		24.6%
Jul		94.36	109.58		16.1%
Aug		85.18	85.98		0.9%
Sep		70.21	71.01		1.1%
4-Oct		56.66	83.94		48.1%
13-Oct		57.46	74.66		29.9%
25-Oct		57.46		72.75	26.6%
Oct	56.74			76.00	33.9%
Nov	60.49			72.00	19.0%
Dec	65.72			72.00	9.6%
Jan	75.25	81.92		75.00	-8.5%
Feb	78.59	76.52		80.00	4.6%
Mar	81.57	82.65		79.00	-4.4%

Loin, 1/4 Trimmed Loin VAC, FOB Plant, USDA

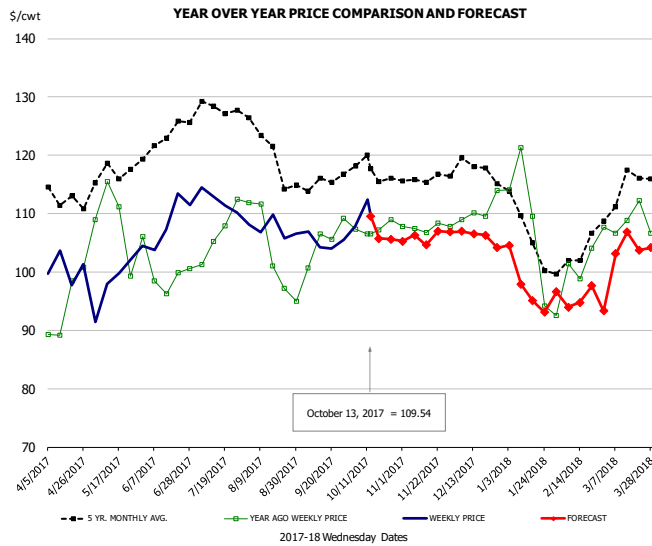


PRICE HISTORY AND FORECAST

- DOLLARS PER CWT -

	5-YR. AVG	YR. AGO	CURRENT	FORECAST	% CH.
Apr	112.59	89.04	88.05		-1.1%
May	122.46	108.60	104.30		-4.0%
Jun	131.62	113.05	117.69		4.1%
Jul	127.37	104.75	119.37		14.0%
Aug	119.99	97.92	100.76		2.9%
Sep	118.05	109.68	95.40		-13.0%
4-Oct		94.05	88.20		-6.2%
13-Oct		94.35	88.77		-5.9%
25-Oct		86.97		87.20	0.3%
Oct	115.34	90.51		90.00	-0.6%
Nov	98.94	77.15		83.00	7.6%
Dec	99.14	83.33		87.00	4.4%
Jan	104.04	91.87		96.00	4.5%
Feb	104.45	89.63		97.00	8.2%
Mar	113.06	99.46		101.00	1.5%

Picnic, Picnic Cushion Meat Combo, FOB Plant, USDA

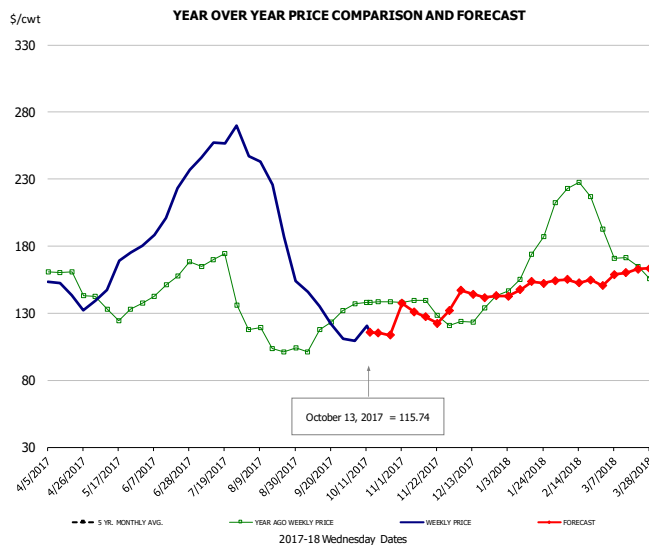


PRICE HISTORY AND FORECAST

- DOLLARS PER CWT -

	5-YR. AVG	YR. AGO	CURRENT	FORECAST	% CH.
Apr	113.06	95.25	99.38		4.3%
May	114.82	106.40	99.50		-6.5%
Jun	121.93	99.75	108.28		8.6%
Jul	125.22	106.52	111.71		4.9%
Aug	120.75	103.31	107.33		3.9%
Sep	114.75	103.15	104.59		1.4%
4-Oct		107.32	107.87		0.5%
13-Oct		106.46	109.54		2.9%
25-Oct		108.92		105.63	-3.0%
Oct	116.68	106.90		107.00	0.1%
Nov	116.07	107.32		106.00	-1.2%
Dec	117.16	108.53		106.00	-2.3%
Jan	106.41	106.45		98.00	-7.9%
Feb	100.89	98.54		95.00	-3.6%
Mar	114.51	105.76		104.00	-1.7%

Belly, Derind Belly 9-13#, FOB Plant, USDA

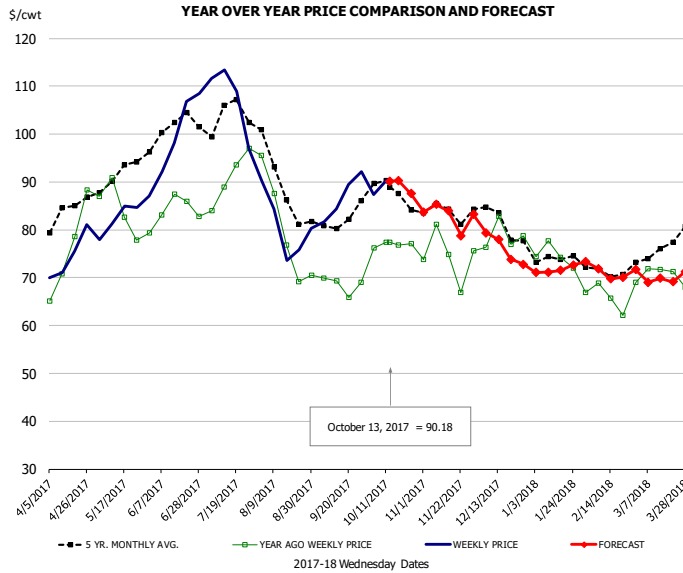


PRICE HISTORY AND FORECAST

- DOLLARS PER CWT -

	5-YR. AVG	YR. AGO	CURRENT	FORECAST	% CH.
Apr	150.50	143.77			-4.5%
May	132.75	160.70			21.1%
Jun	151.89	219.23			44.3%
Jul	154.27	256.47			66.2%
Aug	108.00	193.19			78.9%
Sep	114.69	135.87			18.5%
4-Oct		137.00	109.64		-20.0%
13-Oct		137.79	115.74		-16.0%
25-Oct		138.61		113.52	-18.1%
Oct	137.54			117.00	-14.9%
Nov	129.52			130.00	0.4%
Dec	126.12			144.00	14.2%
Jan	151.62	174.85		149.00	-14.8%
Feb	162.69	216.78		156.00	-28.0%
Mar	160.97	168.90		160.00	-5.3%

Trim, Picnic Meat Combo Cushion Out, FOB Plant, USDA

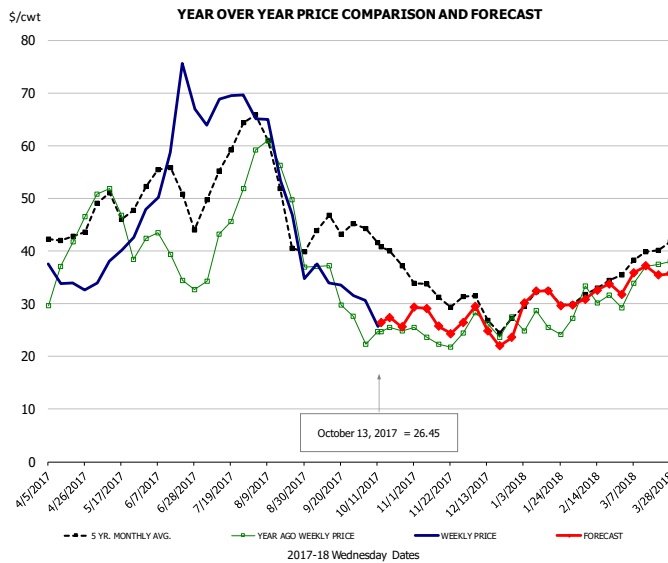


PRICE HISTORY AND FORECAST

- DOLLARS PER CWT -

	5-YR. AVG	YR. AGO	CURRENT	FORECAST	% CH.
Apr	81.51	73.01	74.81		2.5%
May	90.00	83.20	82.92		-0.3%
Jun	99.24	83.67	97.01		15.9%
Jul	102.84	90.26	103.80		15.0%
Aug	88.88	80.02	80.15		0.2%
Sep	80.88	68.35	86.19		26.1%
4-Oct		76.19	87.39		14.7%
13-Oct		77.40	90.18		16.5%
25-Oct		77.03		87.51	13.6%
Oct	86.97	77.78		90.00	15.7%
Nov	83.78	74.75		83.00	11.0%
Dec	81.72	77.24		76.00	-1.6%
Jan	74.69	74.25		72.00	-3.0%
Feb	71.14	65.22		71.00	8.9%
Mar	75.81	71.23		70.00	-1.7%

Trim, 42% Trim Combo, FOB Plant, USDA

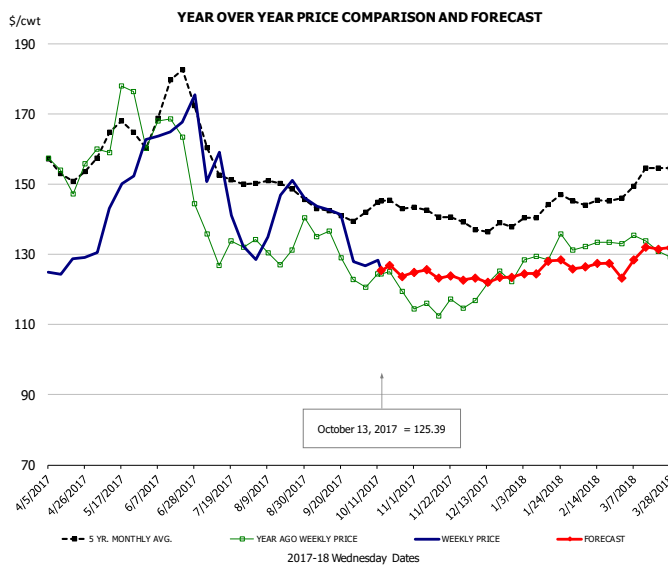


PRICE HISTORY AND FORECAST

- DOLLARS PER CWT -

	5-YR. AVG	YR. AGO	CURRENT	FORECAST	% CH.
Apr	41.60	37.77	34.21		-9.4%
May	46.96	45.54	38.73		-15.0%
Jun	51.82	36.12	62.20		72.2%
Jul	54.66	42.37	68.68		62.1%
Aug	49.58	49.02	49.73		1.5%
Sep	42.99	32.05	33.49		4.5%
4-Oct		22.30	30.62		37.3%
13-Oct		24.65	26.45		7.3%
25-Oct		24.85		25.61	3.1%
Oct	39.77	24.14		27.00	11.9%
Nov	31.35	23.33		27.00	15.8%
Dec	27.84	25.33		25.00	-1.3%
Jan	30.71	25.27		31.00	22.7%
Feb	32.11	30.64		32.00	4.4%
Mar	38.65	35.08		36.00	2.6%

Sparerib, Trmd Sparerib - MED, FOB Plant, USDA

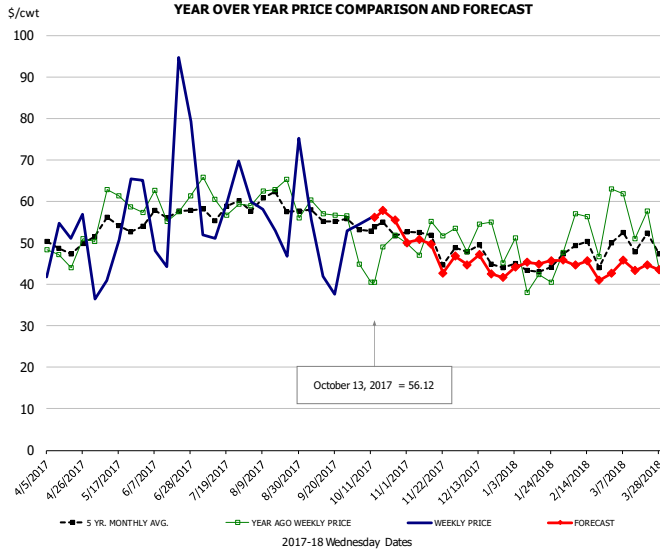


PRICE HISTORY AND FORECAST

- DOLLARS PER CWT -

	5-YR. AVG	YR. AGO	CURRENT	FORECAST	% CH.
Apr	153.12	153.81	127.02		-17.4%
May	161.24	164.92	145.15		-12.0%
Jun	167.22	160.09	161.18		0.7%
Jul	155.64	131.10	139.03		6.0%
Aug	147.98	130.77	142.61		9.0%
Sep	141.10	129.05	133.39		3.4%
4-Oct		120.68	126.72		5.0%
13-Oct		124.40	125.39		0.8%
25-Oct		119.39		123.65	3.6%
Oct	142.22	120.54		124.00	2.9%
Nov	140.71	114.64		124.00	8.2%
Dec	137.35	118.82		123.00	3.5%
Jan	142.07	128.17		126.00	-1.7%
Feb	145.15	132.30		127.00	-4.0%
Mar	150.48	131.43		130.00	-1.1%

Jowl, Skinned Combo, FOB Plant, USDA

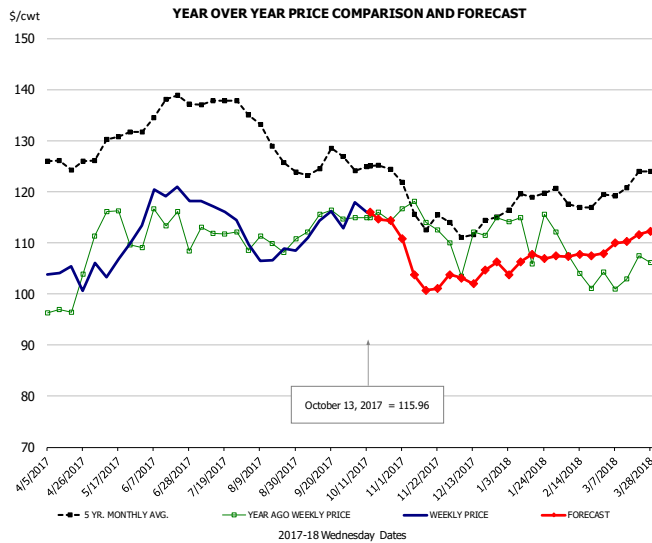


PRICE HISTORY AND FORECAST

- DOLLARS PER CWT -

	5-YR. AVG	YR. AGO	CURRENT	FORECAST	% CH.
Apr	47.93	47.06	51.40		9.2%
May	51.25	57.34	46.49		-18.9%
Jun	55.06	58.70	53.82		-8.3%
Jul	56.77	56.36	58.90		4.5%
Aug	60.22	61.16	55.67		-9.0%
Sep	53.83	54.31	48.77		-10.2%
4-Oct		44.85	54.44		21.4%
13-Oct		40.54	56.12		38.4%
25-Oct		51.85		55.44	6.9%
Oct	51.94	45.93		56.00	21.9%
Nov	47.27	45.28		48.00	6.0%
Dec	45.75	49.79		44.00	-11.6%
Jan	44.09	43.22		45.00	4.1%
Feb	45.87	49.42		44.00	-11.0%
Mar	46.83	50.14		44.00	-12.2%

Loin, Boneless Sirloin, FOB Plant, USDA

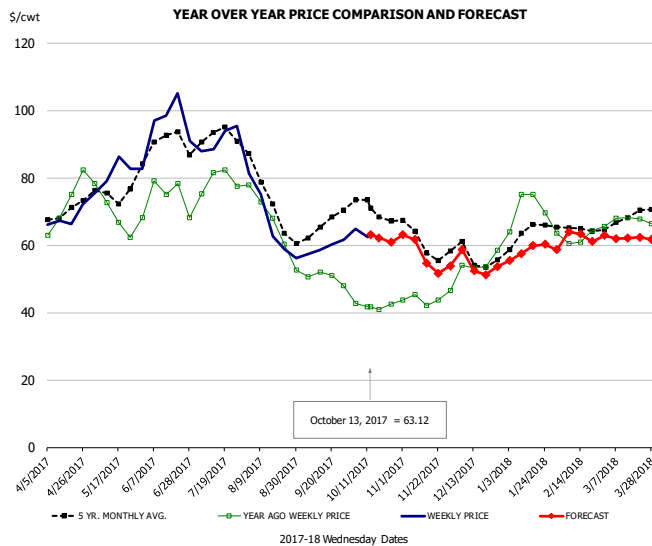


PRICE HISTORY AND FORECAST

- DOLLARS PER CWT -

	5-YR. AVG	YR. AGO	CURRENT	FORECAST	% CH.
Apr	125.17	96.82	102.18		5.5%
May	128.11	111.74	106.40		-4.8%
Jun	134.36	111.74	117.57		5.2%
Jul	137.74	111.68	115.45		3.4%
Aug	130.22	109.41	107.63		-1.6%
Sep	124.81	113.78	112.93		-0.7%
4-Oct		114.96	117.94		2.6%
13-Oct		114.94	115.96		0.9%
25-Oct		114.30		114.33	0.0%
Oct	124.77	114.01		114.00	0.0%
Nov	114.57	112.40		104.00	-7.5%
Dec	112.06	106.93		104.00	-2.7%
Jan	118.49	111.14		106.00	-4.6%
Feb	118.48	104.86		108.00	3.0%
Mar	121.25	103.21		111.00	7.5%

Trim, 72% Trim Combo, FOB Plant, USDA

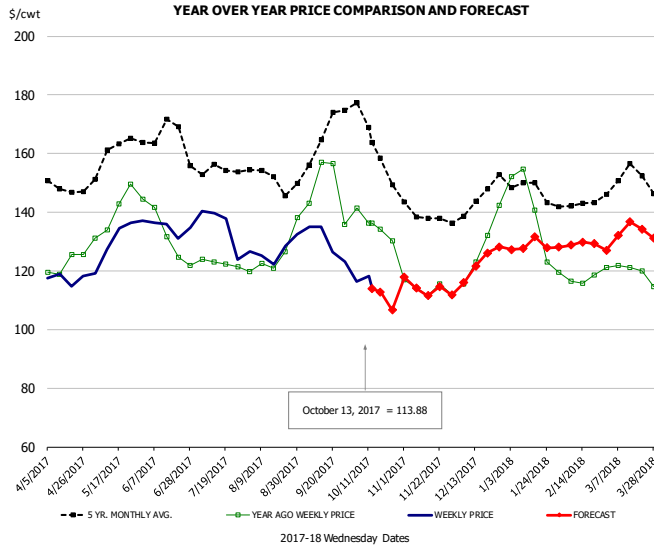


PRICE HISTORY AND FORECAST

- DOLLARS PER CWT -

	5-YR. AVG	YR. AGO	CURRENT	FORECAST	% CH.
Apr	68.75	69.16	68.32		-1.2%
May	74.05	68.65	79.86		16.3%
Jun	88.16	72.56	93.78		29.2%
Jul	91.10	80.01	90.99		13.7%
Aug	72.41	65.88	66.34		0.7%
Sep	64.16	50.63	59.58		17.7%
4-Oct		42.67	64.79		51.8%
13-Oct		41.62	63.12		51.7%
25-Oct		42.47		60.85	43.3%
Oct	69.72	42.44		63.00	48.4%
Nov	60.49	43.84		57.00	30.0%
Dec	56.25	52.98		54.00	1.9%
Jan	62.53	69.78		58.00	-16.9%
Feb	64.07	61.56		63.00	2.3%
Mar	67.50	67.74		62.00	-8.5%

Loin, Bnls CC Strap-on, FOB Plant, USDA

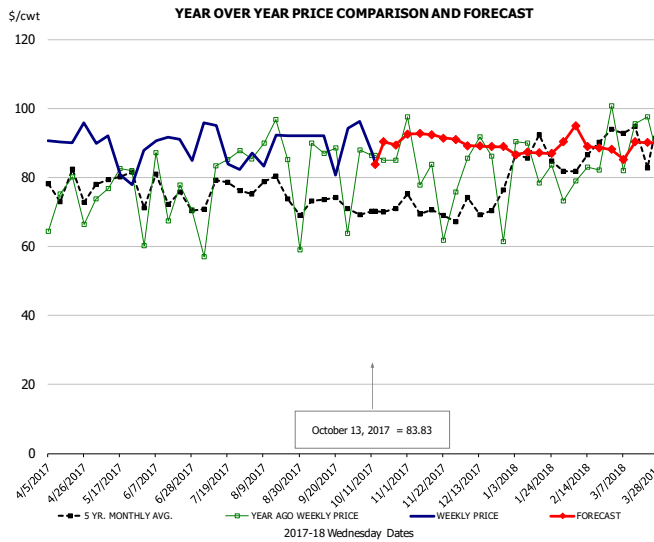


PRICE HISTORY AND FORECAST

- DOLLARS PER CWT -

	5-YR. AVG	YR. AGO	CURRENT	FORECAST	% CH.
Apr	147.53	123.06	116.48		-5.3%
May	157.18	138.89	129.76		-6.6%
Jun	162.47	131.53	133.31		1.4%
Jul	152.25	122.56	132.32		8.0%
Aug	150.71	122.74	126.17		2.8%
Sep	161.98	149.30	127.29		-14.7%
4-Oct		141.42	116.47		-17.6%
13-Oct		136.24	113.88		-16.4%
25-Oct		130.17		106.68	-18.0%
Oct	161.14	132.57		114.00	-14.0%
Nov	138.49	114.24		114.00	-0.2%
Dec	142.82	125.52		123.00	-2.0%
Jan	147.05	137.72		129.00	-6.3%
Feb	140.63	115.91		129.00	11.3%
Mar	151.08	119.07		133.00	11.7%

Brisket Bones, Full, 30#, USDA, FRZ



PRICE HISTORY AND FORECAST

- DOLLARS PER CWT -

	5-YR. AVG	YR. AGO	CURRENT	FORECAST	% CH.
Apr		71.50	91.67		28.2%
May		78.77	85.67		8.8%
Jun		72.60	89.57		23.4%
Jul		78.31	89.23		13.9%
Aug		83.18	89.28		7.3%
Sep		82.36	89.74		9.0%
4-Oct		87.91	96.14		9.4%
13-Oct		86.41	83.83		-3.0%
25-Oct		85.00		89.43	5.2%
Oct		86.09		90.00	4.5%
Nov		79.29		92.00	16.0%
Dec		81.23		89.00	9.6%
Jan	86.61	83.12		87.00	4.7%
Feb	86.44	86.17		92.00	6.8%
Mar	90.89	91.93		88.00	-4.3%



Beef Market - Supply Situation & Outlook

Weekly Beef Production Statistics

Source: USDA

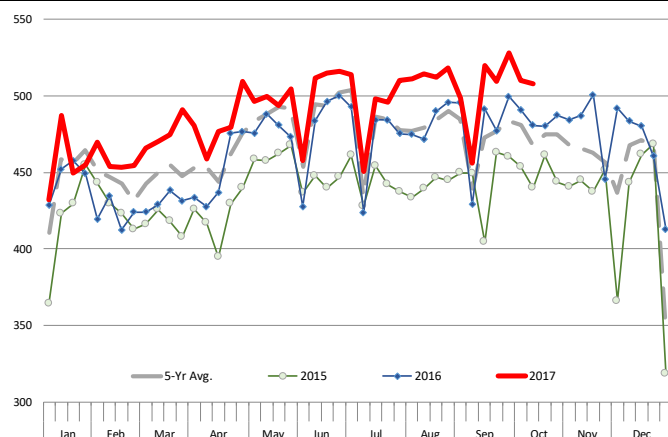
		Slaughter (1000 hd)	% CH.	Dressed Wt LBS	% CH.	Production (Million lbs)	% CH.
Year Ago	15-Oct-16	600.6		844.0		506.1	
This Week	14-Oct-17	622.0	3.6%	829.0	-1.8%	514.4	1.6%
Last Week	7-Oct-17	632.0		829.0		522.8	
This Week	14-Oct-17	622.0	-1.6%	829.0	0.0%	514.4	-1.6%
YTD Last Year	15-Oct-16	23,575		826.1		19,417	
YTD This Year	14-Oct-17	24,932	5.8%	811.0	-1.8%	20,220	4.1%

Quarterly History + Forecasts

Q1 2016	7,184		826.5		5,938	
Q2 2016	7,631		810.9		6,187	
Q3 2016	7,845		824.9		6,472	
Q4 2016	7,919		836.6		6,625	
Annual	30,578	Y/Y % CH.	824.7	Y/Y % CH.	25,221	Y/Y % CH.
Q1 2017	7,711	7.3%	817.0	-1.1%	6,300	6.1%
Q2 2017	8,074	5.8%	793.2	-2.2%	6,404	3.5%
Q3 2017	8,166	4.1%	822.0	-0.4%	6,713	3.7%
Q4 2017	8,188	3.4%	836.0	-0.1%	6,845	3.3%
Annual	32,139	5.1%	817.0	-0.9%	26,262	4.1%
Q1 2018	7,942	3.0%	821.0	0.5%	6,521	3.5%
Q2 2018	8,308	2.9%	805.0	1.5%	6,688	4.4%
Q3 2018	8,477	3.8%	826.0	0.5%	7,002	4.3%
Q4 2018	8,425	2.9%	841.0	0.6%	7,086	3.5%
Annual	33,152	3.2%	823.3	0.8%	27,296	3.9%

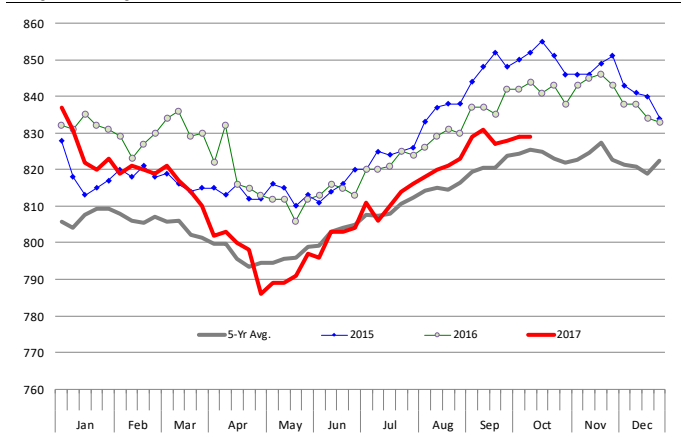
WEEKLY STEER AND HEIFER SLAUGHTER, '000 HEAD

Source: USDA



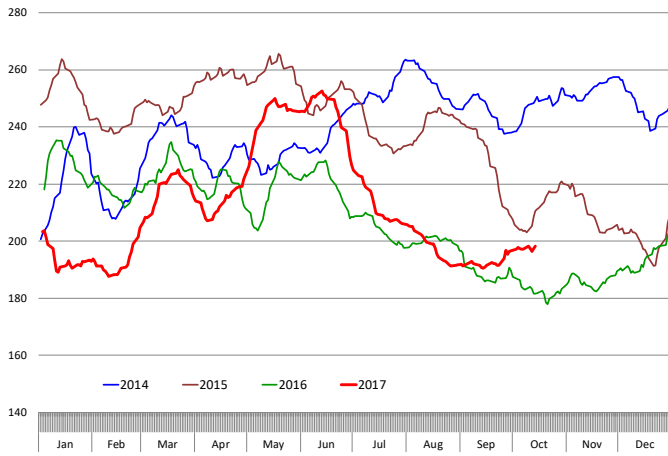
Weekly Average FI Cattle Carcass Weights (Includes Fed & Non Fed Cattle)

Average Dressed Weight Per Carcass. Data Source: USDA AMS

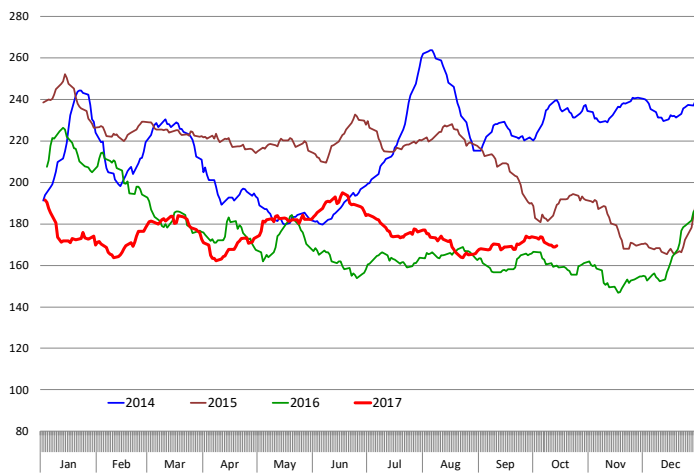


Beef Primal Values

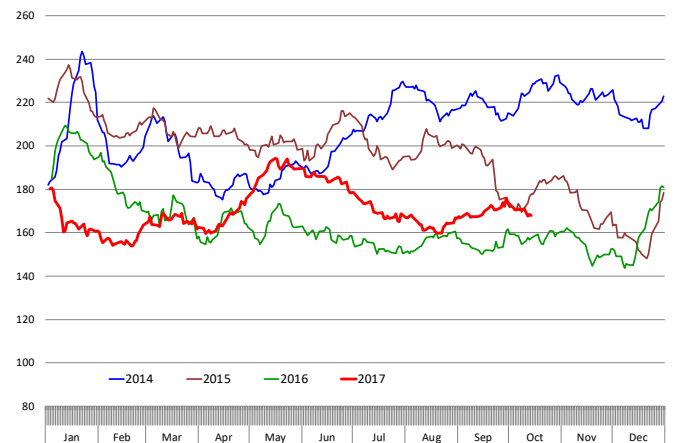
Beef Choice Cutout Value, USDA, Daily, \$/cwt



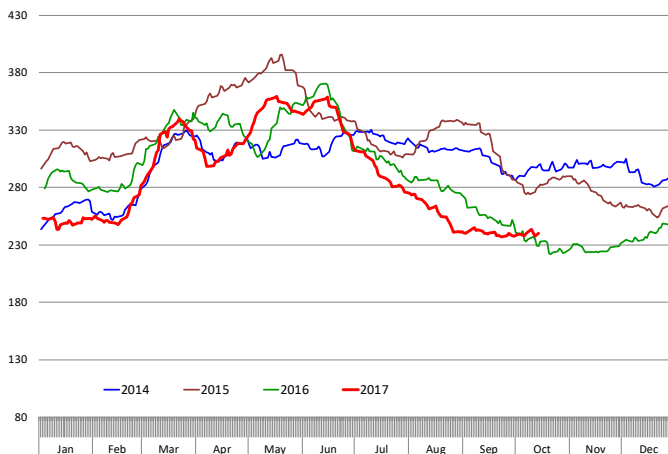
Primal Round Cutout Value, USDA, Daily, \$/cwt



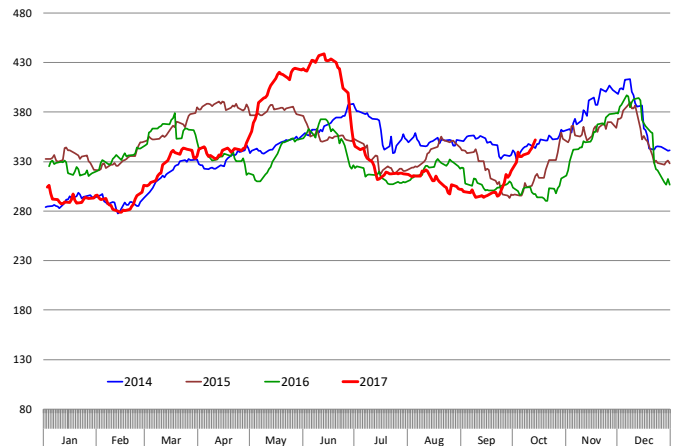
Primal Chuck Cutout Value, USDA, Daily, \$/cwt



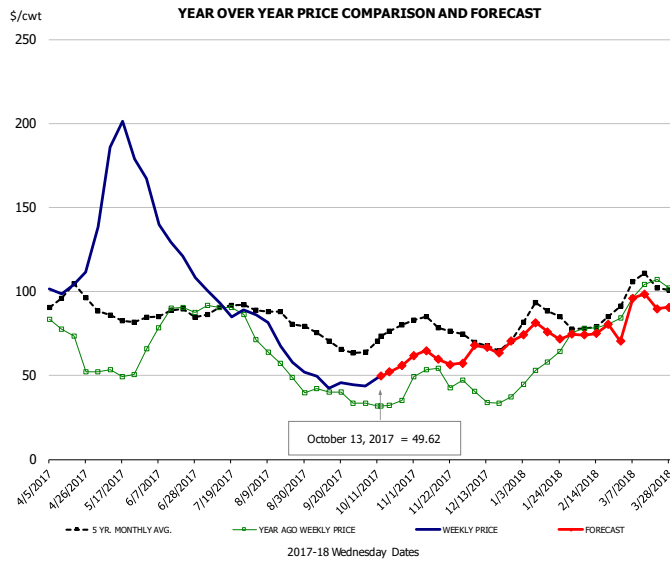
Primal Loin Cutout Value, USDA, Daily, \$/cwt



Primal Rib Cutout Value, USDA, Daily, \$/cwt



50CL BEEF TRIM, FRESH, NATIONAL, USDA

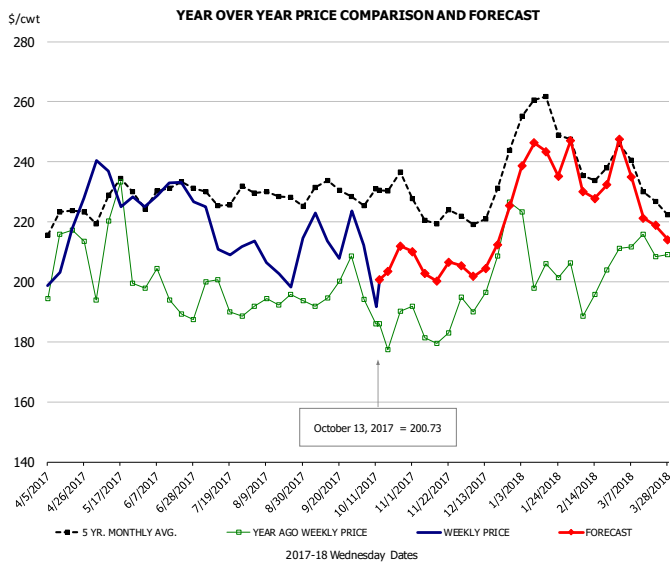


PRICE HISTORY AND FORECAST

- DOLLARS PER CWT -

	5-YR. AVG	YR. AGO	CURRENT	FORECAST	% CH.
Apr	93.75	71.83	105.46		46.8%
May	85.56	50.91	176.71		247.1%
Jun	86.79	85.29	131.93		54.7%
Jul	89.06	89.98	92.86		3.2%
Aug	84.66	56.40	68.58		21.6%
Sep	70.05	38.06	45.14		18.6%
4-Oct		33.44	43.60		30.4%
13-Oct		31.62	49.62		56.9%
25-Oct			35.32	55.80	58.0%
Oct	71.22	33.41		50.00	49.7%
Nov	79.69	48.78		60.00	23.0%
Dec	68.52	37.94		67.00	76.6%
Jan	84.83	56.26		76.00	35.1%
Feb	78.59	79.34		76.00	-4.2%
Mar	101.58	98.83		92.00	-6.9%

SELECT, 114A, 3 SHOULDER CLOD, TRIMMED, 1/4" MAX, USDA

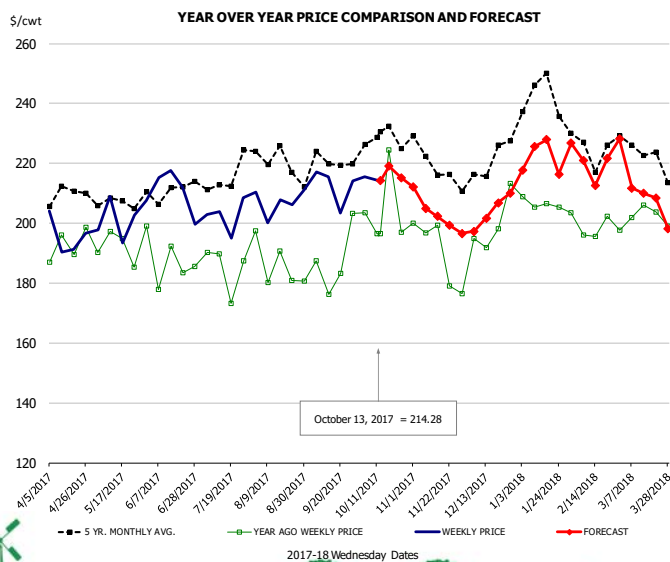


PRICE HISTORY AND FORECAST

- DOLLARS PER CWT -

	5-YR. AVG	YR. AGO	CURRENT	FORECAST	% CH.
Apr	219.22	208.88	204.47		-2.1%
May	225.74	202.51	228.70		12.9%
Jun	226.76	191.13	228.26		19.4%
Jul	226.68	194.33	210.01		8.1%
Aug	228.05	192.10	205.70		7.1%
Sep	228.50	196.86	215.26		9.3%
4-Oct		194.24	212.29		9.3%
13-Oct		186.11	200.73		7.9%
25-Oct		190.29		211.94	11.4%
Oct	227.15	181.80		205.00	12.8%
Nov	220.68	182.92		205.00	12.1%
Dec	222.58	199.03		211.00	6.0%
Jan	253.03	199.89		241.00	20.6%
Feb	237.50	200.26		232.00	15.8%
Mar	231.12	208.65		226.00	8.3%

SELECT, 170 GOOSENECK ROUND, 18-33, USDA

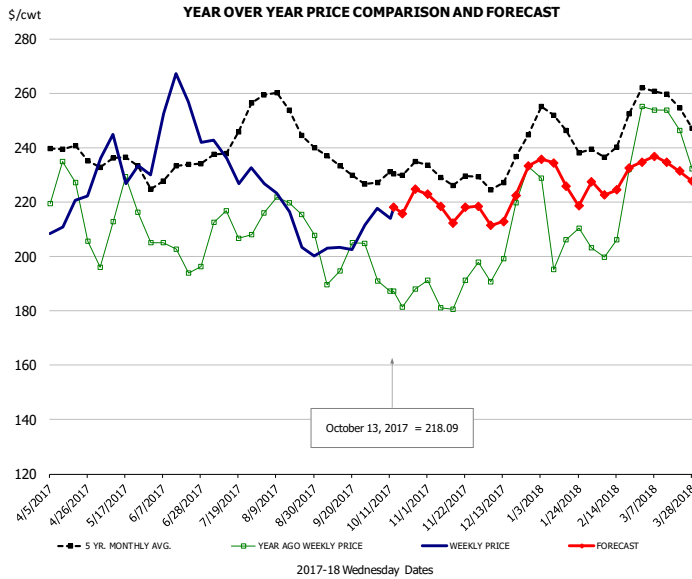


PRICE HISTORY AND FORECAST

- DOLLARS PER CWT -

	5-YR. AVG	YR. AGO	CURRENT	FORECAST	% CH.
Apr	205.82	189.73	192.05		1.2%
May	204.21	189.37	200.80		6.0%
Jun	203.91	182.13	206.07		13.1%
Jul	210.31	183.22	195.62		6.8%
Aug	218.27	185.93	198.93		7.0%
Sep	213.89	181.42	204.12		12.5%
4-Oct		203.54	215.50		5.9%
13-Oct		196.62	214.28		9.0%
25-Oct		197.07		215.19	9.2%
Oct	224.02	193.67		215.00	11.0%
Nov	216.55	191.35		203.00	6.1%
Dec	213.67	196.97		204.00	3.6%
Jan	235.53	200.42		222.00	10.8%
Feb	221.47	194.76		220.00	13.0%
Mar	218.70	200.86		209.00	4.1%

CHOICE, 168, 3 TOP INSIDE ROUND, 1/4" MAX, USDA

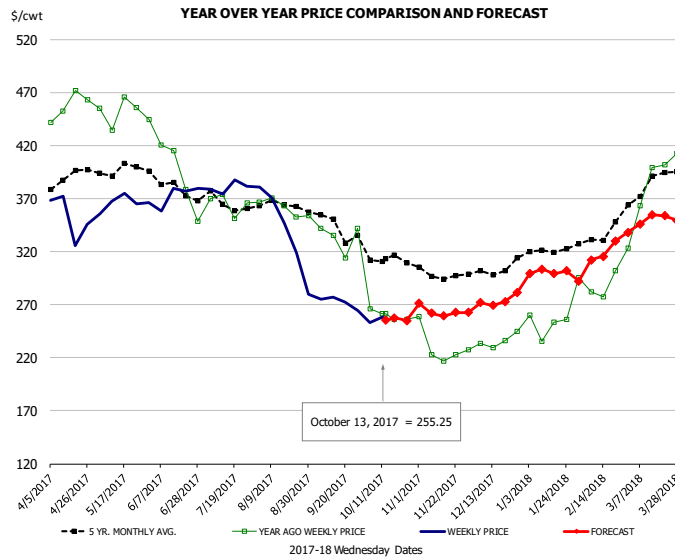


PRICE HISTORY AND FORECAST

- DOLLARS PER CWT -

	5-YR. AVG	YR. AGO	CURRENT	FORECAST	% CH.
Apr	237.53	218.68	214.51		-1.9%
May	232.74	209.77	231.79		10.5%
Jun	227.92	199.10	250.42		25.8%
Jul	239.92	210.22	232.10		10.4%
Aug	251.27	216.92	210.80		-2.8%
Sep	232.04	197.84	204.20		3.2%
4-Oct		191.04	217.75		14.0%
13-Oct		187.29	218.09		16.4%
25-Oct		188.07		224.75	19.5%
Oct	228.91	188.47		218.00	15.7%
Nov	228.26	184.56		218.00	18.1%
Dec	230.16	202.66		220.00	8.6%
Jan	245.80	205.90		229.00	11.2%
Feb	242.05	216.10		226.00	4.6%
Mar	255.24	242.49		234.00	-3.5%

CHOICE, 184, 3 TOP BUTT, BONELESS, USDA

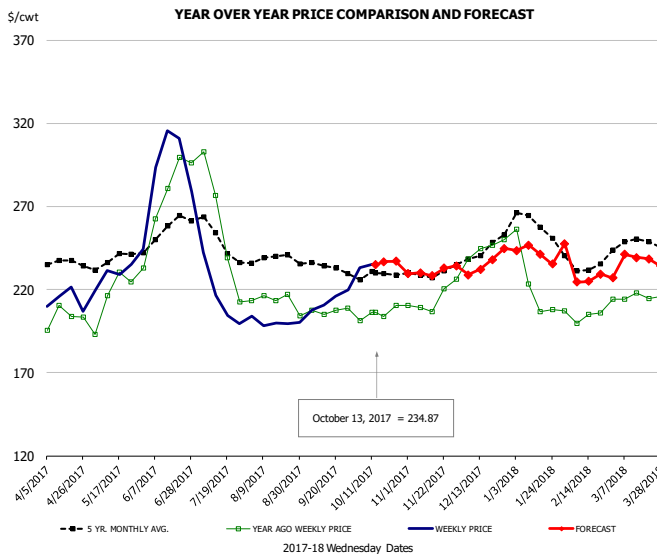


PRICE HISTORY AND FORECAST

- DOLLARS PER CWT -

	5-YR. AVG	YR. AGO	CURRENT	FORECAST	% CH.
Apr	383.17	447.93	358.69		-19.9%
May	394.09	439.96	365.43		-16.9%
Jun	378.30	385.66	367.27		-4.8%
Jul	363.90	367.63	378.05		2.8%
Aug	359.92	361.05	333.81		-7.5%
Sep	344.19	327.08	273.17		-16.5%
4-Oct		266.41	253.07		-5.0%
13-Oct		261.16	255.25		-2.3%
25-Oct		256.23		255.01	-0.5%
Oct	310.07	270.49		255.00	-5.7%
Nov	296.97	230.13		262.00	13.8%
Dec	297.06	230.77		269.00	16.6%
Jan	317.78	248.53		299.00	20.3%
Feb	329.27	291.00		311.00	6.9%
Mar	381.86	380.54		348.00	-8.6%

CHOICE, 120, 1 BRISKET, DECKLE-OFF, BONELESS, USDA

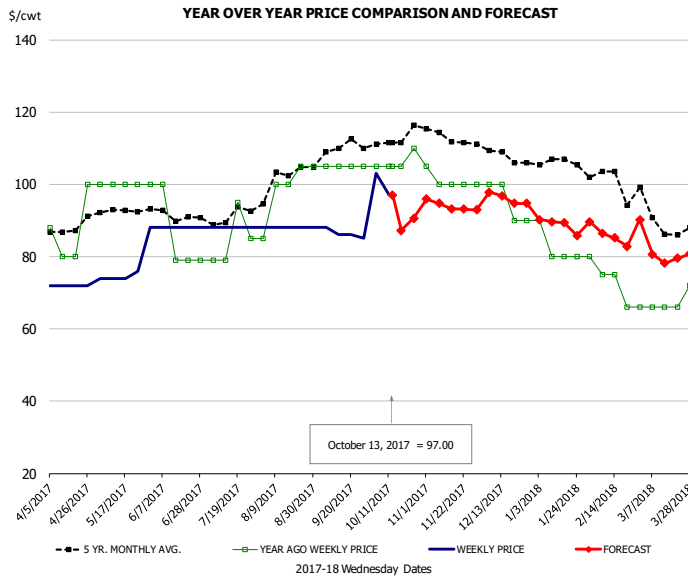


PRICE HISTORY AND FORECAST

- DOLLARS PER CWT -

	5-YR. AVG	YR. AGO	CURRENT	FORECAST	% CH.
Apr	234.15	200.29	210.28		5.0%
May	235.76	213.21	232.08		8.9%
Jun	252.58	271.05	290.22		7.1%
Jul	244.22	238.91	210.89		-11.7%
Aug	236.41	209.69	199.86		-4.7%
Sep	233.03	205.51	210.77		2.6%
4-Oct		201.26	233.34		15.9%
13-Oct		206.17	234.87		13.9%
25-Oct		210.30		236.94	12.7%
Oct	227.76	203.84		235.00	15.3%
Nov	227.91	209.71		231.00	10.2%
Dec	240.69	243.10		236.00	-2.9%
Jan	253.95	215.96		242.00	12.1%
Feb	232.37	204.57		228.00	11.5%
Mar	243.58	211.62		238.00	12.5%

UB Beef Tripe, Scalded, Edible

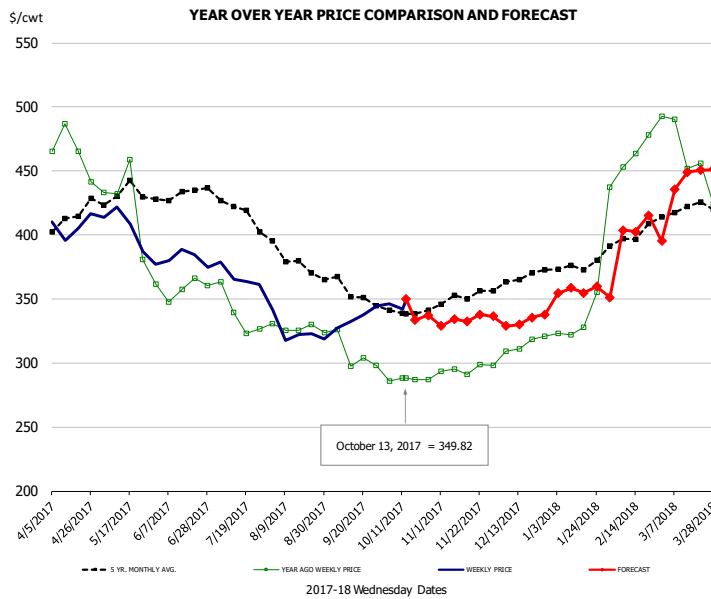


PRICE HISTORY AND FORECAST

- DOLLARS PER CWT -

	5-YR. AVG	YR. AGO	CURRENT	FORECAST	% CH.
Apr	87.61	87.00	72.00		-17.2%
May	92.57	100.00	77.20		-22.8%
Jun	91.26	87.40	88.00		0.7%
Jul	91.15	84.50	88.00		4.1%
Aug	101.60	99.00	88.00		-11.1%
Sep	108.95	105.00	86.25		-17.9%
4-Oct		105.00	103.00		-1.9%
13-Oct		105.00	97.00		-7.6%
25-Oct		110.00		90.65	-17.6%
Oct	112.11	106.25		88.00	-17.2%
Nov	113.25	101.00		94.00	-6.9%
Dec	108.19	95.00		96.00	1.1%
Jan	106.02	82.50		89.00	7.9%
Feb	100.85	74.00		85.00	14.9%
Mar	90.82	67.20		81.00	20.5%

Inside Skirt, USDA



PRICE HISTORY AND FORECAST

- DOLLARS PER CWT -

	5-YR. AVG	YR. AGO	CURRENT	FORECAST	% CH.
Apr	410.70	465.88	408.95		-12.2%
May	425.33	410.95	395.52		-3.8%
Jun	428.75	357.62	378.23		5.8%
Jul	416.81	336.73	367.65		9.2%
Aug	377.59	326.10	325.53		-0.2%
Sep	352.82	302.95	333.00		9.9%
4-Oct		286.02	345.93		20.9%
13-Oct		288.44	349.82		21.3%
25-Oct		286.93		337.33	17.6%
Oct	340.09	291.46		336.00	15.3%
Nov	348.39	295.12		334.00	13.2%
Dec	362.92	311.40		333.00	6.9%
Jan	374.57	333.45		357.00	7.1%
Feb	395.76	459.40		405.00	-11.8%
Mar	417.87	461.72		444.00	-3.8%



Broiler Market - Supply Situation & Outlook

Weekly Broiler Production Statistics

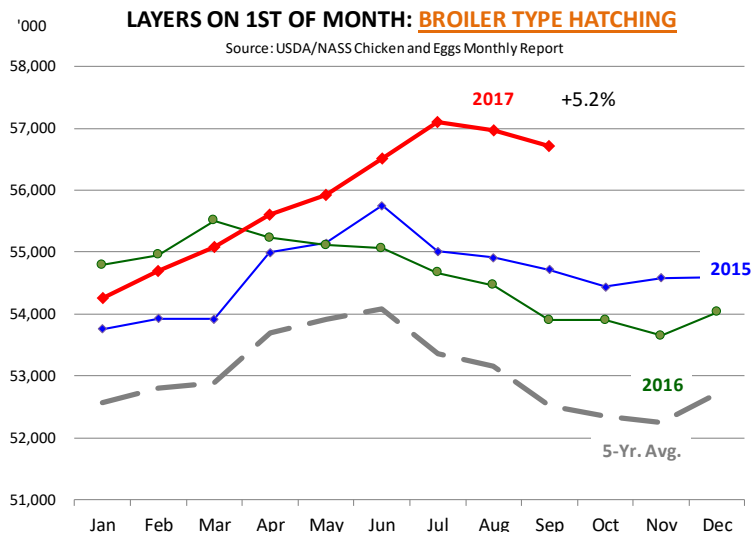
Source: USDA

		Slaughter (million hd)	% CH.	Dressed Wt LBS	% CH.	Production RTC (Million lbs)	% CH.
Year Ago	8-Oct-16	162.8		4.88		794.3	
Last Week	7-Oct-17	165.8	1.9%	4.70	-3.6%	780.2	-1.8%
Prev. Week	30-Sep-17	167.0		4.75		793.1	
Last Week	7-Oct-17	165.8	-0.7%	4.70	-1.0%	780.2	-1.6%
YTD Last Year	8-Oct-16	6,531		4.66		30,422	
YTD This Year	7-Oct-17	6,467	-1.0%	4.66	0.0%	30,119	-1.0%

Quarterly History + Forecasts

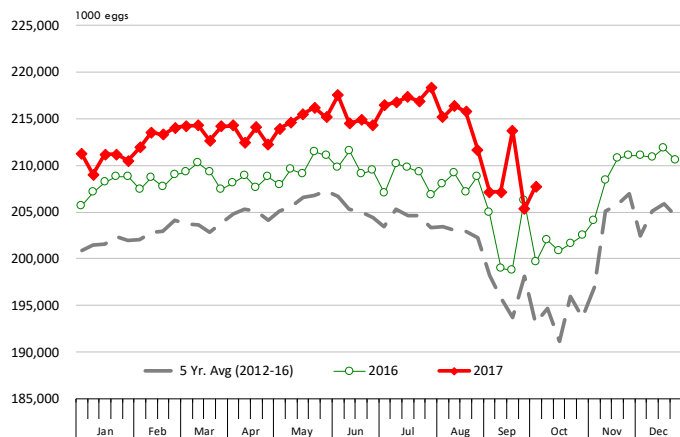
Q1 2016	2,160		4.65		10,039	
Q2 2016	2,207		4.65		10,253	
Q3 2016	2,248		4.60		10,338	
Q4 2016	2,154		4.67		10,065	
Annual	8,768	Y/Y % CH.	4.64	Y/Y % CH.	40,696	Y/Y % CH.
Q1 2017	2,201	1.9%	4.65	0.0%	10,233	1.9%
Q2 2017	2,236	1.3%	4.65	0.2%	10,407	1.5%
Q3 2017	2,261	0.6%	4.62	0.4%	10,446	1.0%
Q4 2017	2,204	2.3%	4.70	0.6%	10,357	2.9%
Annual	8,901	1.5%	4.66	0.3%	41,443	1.8%
Q1 2018	2,234	1.5%	4.67	0.4%	10,431	1.9%
Q2 2018	2,267	1.4%	4.67	0.3%	10,588	1.7%
Q3 2018	2,293	1.4%	4.65	0.6%	10,662	2.1%
Q4 2018	2,232	1.3%	4.72	0.4%	10,536	1.7%
Annual	9,026	1.4%	4.68	0.5%	42,217	1.9%





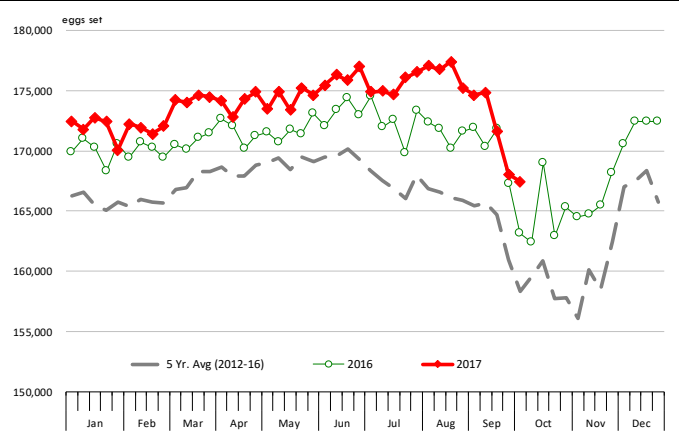
US WEEKLY BROILER EGG SETS, 19 SELECTED STATES

Source: USDA Broiler Hatchery Report

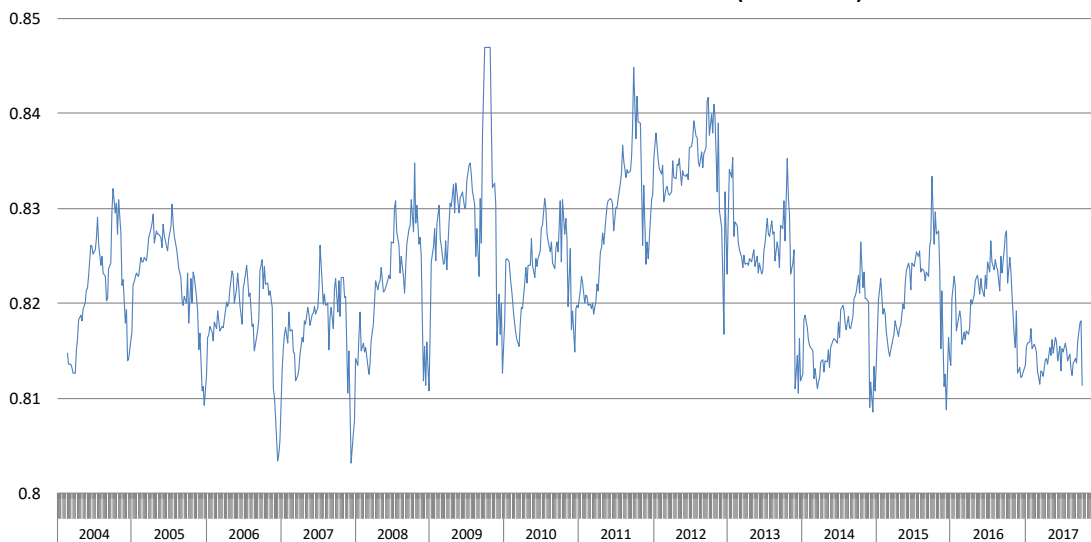


US WEEKLY BROILER CHICK PLACEMENTS, 19 STATES

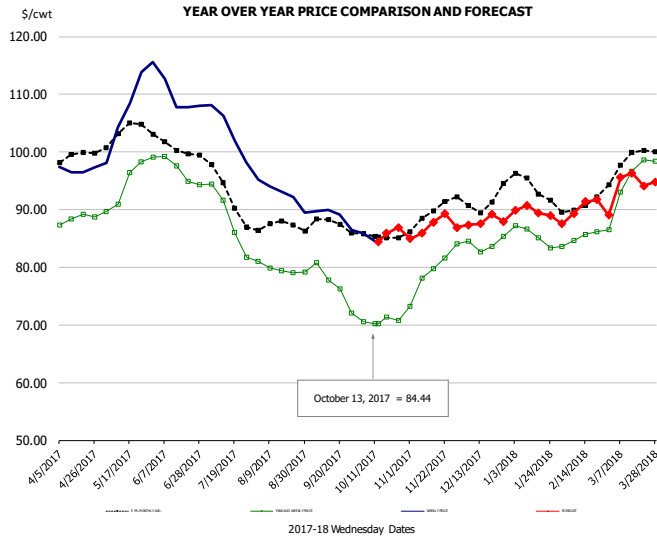
Source: USDA Broiler Hatchery Report



RATIO OF CHICK PLACEMENTS VS. EGG SETS (21 DAY LAG)



BROILER, NATIONAL WHOLE BIRD PRICE, USDA

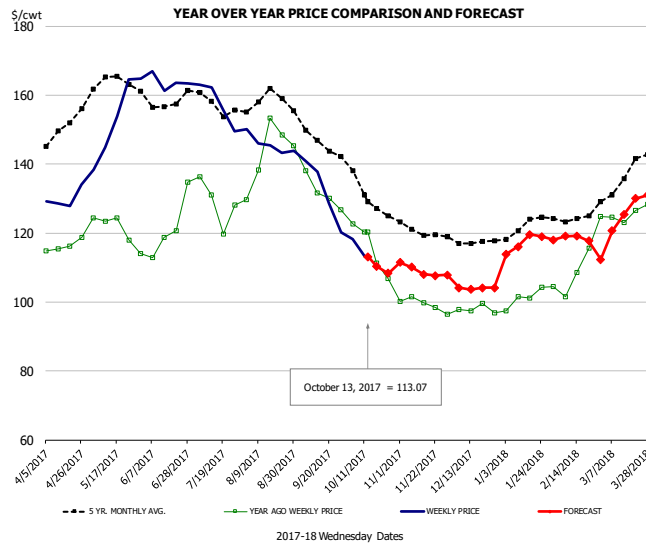


PRICE HISTORY AND FORECAST

- DOLLARS PER CWT -

	5-YR. AVG	YR. AGO	CURRENT	FORECAST	% CH.
Apr	99.12	88.41	96.90		9.6%
May	103.16	93.82	108.05		15.2%
Jun	101.04	96.99	109.03		12.4%
Jul	93.72	88.44	103.65		17.2%
Aug	87.15	79.69	92.80		16.5%
Sep	87.07	76.71	88.83		15.8%
4-Oct		70.59	85.87		21.6%
13-Oct		70.26	84.44		20.2%
25-Oct		70.81		86.86	22.7%
Oct	85.41	70.75		85.00	20.1%
Nov	89.18	79.35		87.00	9.6%
Dec	91.29	84.05		88.00	4.7%
Jan	94.17	85.58		90.00	5.2%
Feb	90.60	85.01		90.00	5.9%
Mar	98.32	94.65		95.00	0.4%

N.E. BROILER BREAST BONELESS-SKINLESS, USDA

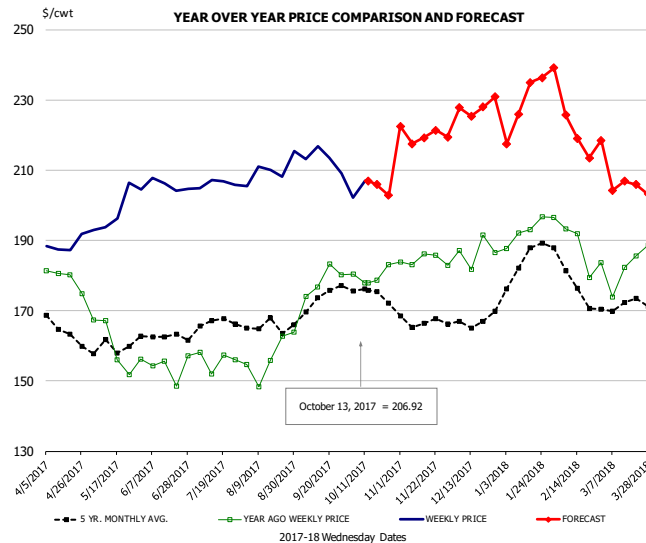


PRICE HISTORY AND FORECAST

- DOLLARS PER CWT -

	5-YR. AVG	YR. AGO	CURRENT	FORECAST	% CH.
Apr	148.36	116.29	129.87		11.7%
May	162.90	122.57	153.28		25.1%
Jun	158.64	120.23	163.75		36.2%
Jul	157.70	128.78	157.63		22.4%
Aug	158.15	142.99	145.75		1.9%
Sep	147.47	131.63	131.91		0.2%
4-Oct		122.61	118.24		-3.6%
13-Oct		120.38	113.07		-6.1%
25-Oct		106.78		108.31	1.4%
Oct	131.98	115.26		113.00	-2.0%
Nov	120.64	99.24		109.00	9.8%
Dec	117.56	97.93		104.00	6.2%
Jan	121.75	101.17		117.00	15.7%
Feb	124.10	107.51		119.00	10.7%
Mar	132.19	112.62		125.00	11.0%

N.E. BROILER WINGS, USDA, WT.AVG.

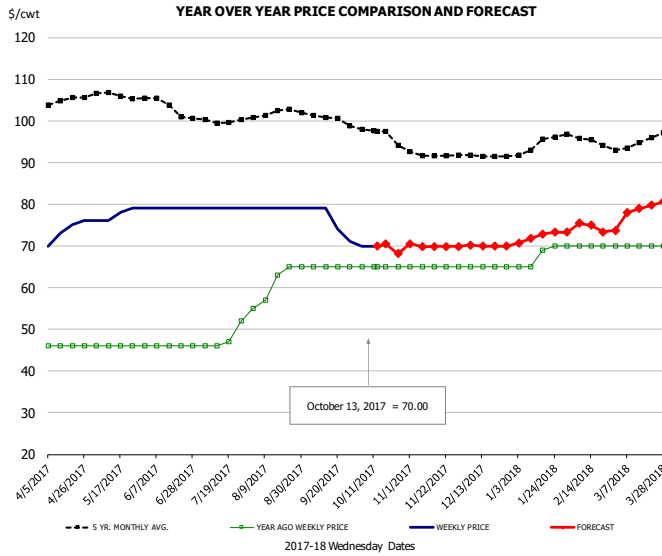


PRICE HISTORY AND FORECAST

- DOLLARS PER CWT -

	5-YR. AVG	YR. AGO	CURRENT	FORECAST	% CH.
Apr	166.15	179.27	188.71		5.3%
May	159.21	160.60	198.74		23.8%
Jun	162.95	154.39	205.67		33.2%
Jul	165.60	155.87	206.21		32.3%
Aug	165.58	157.08	210.05		33.7%
Sep	172.43	178.59	213.14		19.3%
4-Oct		180.37	202.13		12.1%
13-Oct		177.98	206.92		16.3%
25-Oct		183.18		202.86	10.7%
Oct	175.17	180.05		206.00	14.4%
Nov	166.86	184.38		220.00	19.3%
Dec	166.76	186.70		228.00	22.1%
Jan	183.02	192.36		228.00	18.5%
Feb	179.03	190.28		223.00	17.2%
Mar	171.89	182.84		204.00	11.6%

NE BONELESS BREAST BROILER WHITE TRIM MEAT, UNDER 15%, FRESH

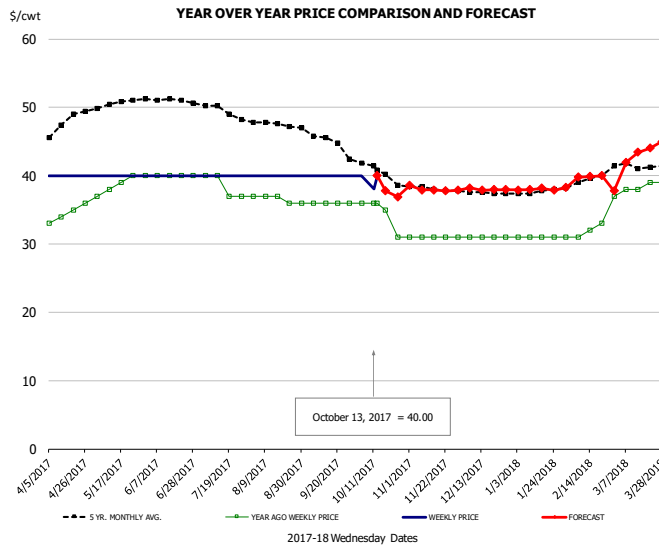


PRICE HISTORY AND FORECAST

- DOLLARS PER CWT -

	5-YR. AVG	YR. AGO	CURRENT	FORECAST	% CH.
Apr	104.42	46.00	73.50		59.8%
May	105.86	46.00	77.60		68.7%
Jun	103.90	46.00	79.00		71.7%
Jul	100.07	47.75	79.00		65.4%
Aug	102.00	61.00	79.00		29.5%
Sep	100.92	65.00	75.75		16.5%
4-Oct		65.00	70.00		7.7%
13-Oct		65.00	70.00		7.7%
25-Oct		65.00		68.14	4.8%
Oct	97.02	65.00		70.00	7.7%
Nov	91.85	65.00		70.00	7.7%
Dec	91.56	65.00		70.00	7.7%
Jan	94.04	67.80		72.00	6.2%
Feb	95.55	70.00		75.00	7.1%
Mar	94.30	70.00		79.00	12.9%

UB CHICKEN - NE DRUMSTICKS, (BULK)

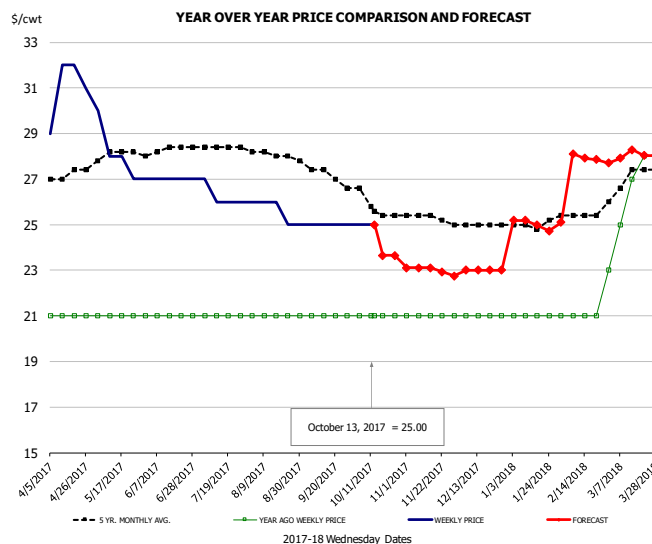


PRICE HISTORY AND FORECAST

- DOLLARS PER CWT -

	5-YR. AVG	YR. AGO	CURRENT	FORECAST	% CH.
Apr	46.98	34.50	40.00		15.9%
May	50.50	38.50	40.00		3.9%
Jun	51.10	40.00	40.00		0.0%
Jul	49.66	38.50	40.00		3.9%
Aug	47.57	36.60	40.00		9.3%
Sep	45.65	36.00	40.00		11.1%
4-Oct		36.00	40.00		11.1%
13-Oct		36.00	40.00		11.1%
25-Oct		31.00		36.92	19.1%
Oct	40.82	34.50		38.00	10.1%
Nov	38.15	31.00		38.00	22.6%
Dec	37.56	31.00		38.00	22.6%
Jan	37.63	31.00		38.00	22.6%
Feb	39.20	31.75		40.00	26.0%
Mar	41.43	38.20		43.00	12.6%

MECHANICALLY SEPARATED CHICKEN-FRESH-15-20% FAT W/SKN

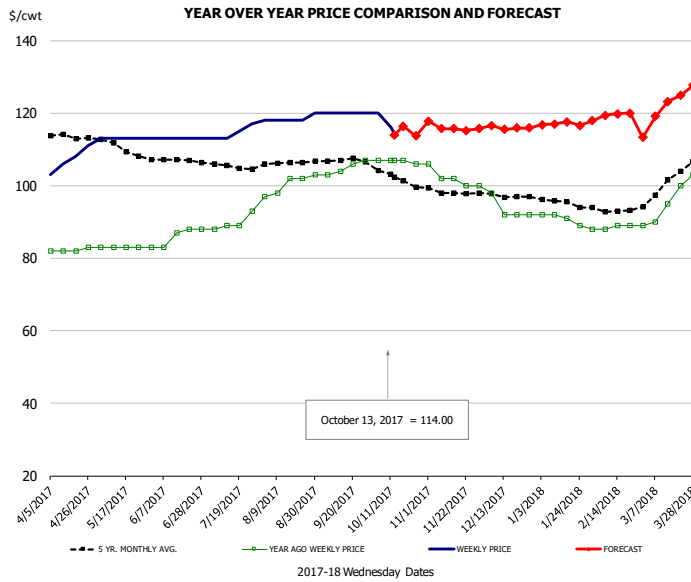


PRICE HISTORY AND FORECAST

- DOLLARS PER CWT -

	5-YR. AVG	YR. AGO	CURRENT	FORECAST	% CH.
Apr	27.10	21.00	31.00		47.6%
May	28.02	21.00	28.00		33.3%
Jun	28.25	21.00	27.00		28.6%
Jul	28.40	21.00	26.25		25.0%
Aug	28.12	21.00	25.60		21.9%
Sep	27.37	21.00	25.00		19.0%
4-Oct		21.00	25.00		19.0%
13-Oct		21.00	25.00		19.0%
25-Oct		21.00		23.65	12.6%
Oct	25.93	21.00		24.00	14.3%
Nov	25.35	21.00		23.00	9.5%
Dec	25.00	21.00		23.00	9.5%
Jan	24.98	21.00		25.00	19.0%
Feb	25.40	21.00		28.00	33.3%
Mar	26.91	26.20		28.00	6.9%

UB NE Whole Leg Meat 4/10's

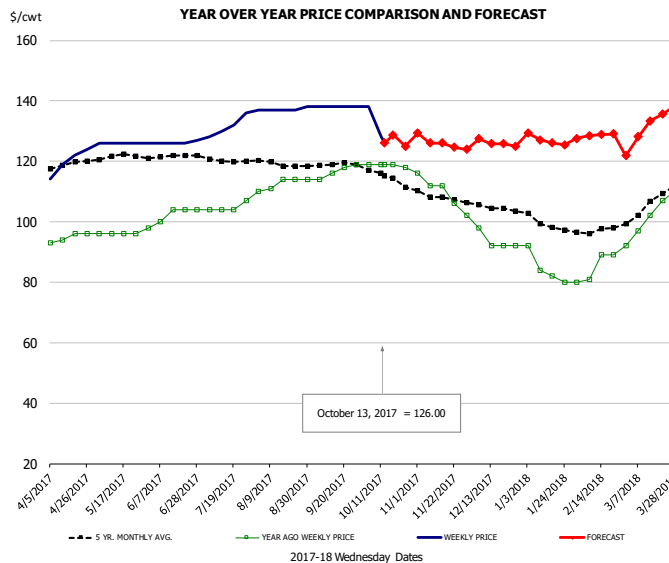


PRICE HISTORY AND FORECAST

- DOLLARS PER CWT -

	5-YR. AVG	YR. AGO	CURRENT	FORECAST	% CH.
Apr	113.62	82.25	107.00		30.1%
May	110.77	83.00	113.00		36.1%
Jun	107.26	85.80	113.00		31.7%
Jul	105.53	89.75	114.50		27.6%
Aug	106.14	100.40	118.40		17.9%
Sep	107.09	105.00	120.00		14.3%
4-Oct		107.00	120.00		12.1%
13-Oct		107.00	114.00		6.5%
25-Oct		106.00		113.66	7.2%
Oct	102.78	106.75		117.00	9.6%
Nov	98.20	102.00		116.00	13.7%
Dec	97.06	93.50		116.00	24.1%
Jan	95.30	90.40		117.00	29.4%
Feb	93.25	88.50		120.00	35.6%
Mar	100.11	95.40		122.00	27.9%

UB NE Boneless/Skinless Thigh Meat, Special Trim

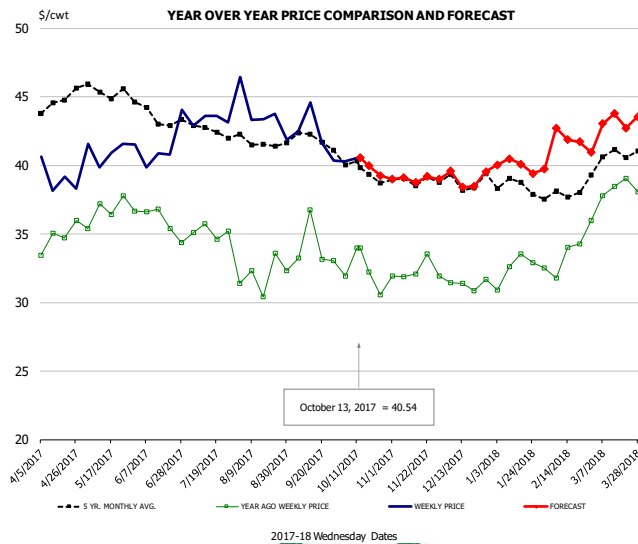


PRICE HISTORY AND FORECAST

- DOLLARS PER CWT -

	5-YR. AVG	YR. AGO	CURRENT	FORECAST	% CH.
Apr	118.29	94.75	119.75		26.4%
May	121.29	96.00	126.00		31.3%
Jun	121.70	102.00	126.25		23.8%
Jul	120.55	104.75	131.50		25.5%
Aug	119.27	112.60	137.20		21.8%
Sep	118.99	116.75	138.00		18.2%
4-Oct		119.00	138.00		16.0%
13-Oct		119.00	126.00		5.9%
25-Oct		118.00		124.96	5.9%
Oct	115.34	118.75		129.00	8.6%
Nov	108.07	109.60		126.00	15.0%
Dec	104.54	93.50		126.00	34.8%
Jan	99.22	83.60		127.00	51.9%
Feb	97.10	84.75		129.00	52.2%
Mar	105.43	101.60		132.00	29.9%

N.E. BROILER LEG QUARTERS, USDA



PRICE HISTORY AND FORECAST

- DOLLARS PER CWT -

	5-YR. AVG	YR. AGO	CURRENT	FORECAST	% CH.
Apr	44.57	34.81	39.06		12.2%
May	45.44	36.70	41.08		11.9%
Jun	43.62	35.97	41.38		15.0%
Jul	42.78	35.16	43.31		23.2%
Aug	41.58	32.01	43.75		36.7%
Sep	41.97	34.05	42.28		24.2%
4-Oct		31.91	40.31		26.3%
13-Oct		33.96	40.54		19.4%
25-Oct		30.54		39.26	28.6%
Oct	39.84	32.16		40.00	24.4%
Nov	38.90	32.27		39.00	20.9%
Dec	38.76	31.34		39.00	24.5%
Jan	38.49	32.48		40.00	23.2%
Feb	37.85	33.14		42.00	26.7%
Mar	40.50	37.87		43.00	13.6%

Turkey Market - Supply Situation & Outlook

Weekly Turkey Production Statistics

Source: USDA

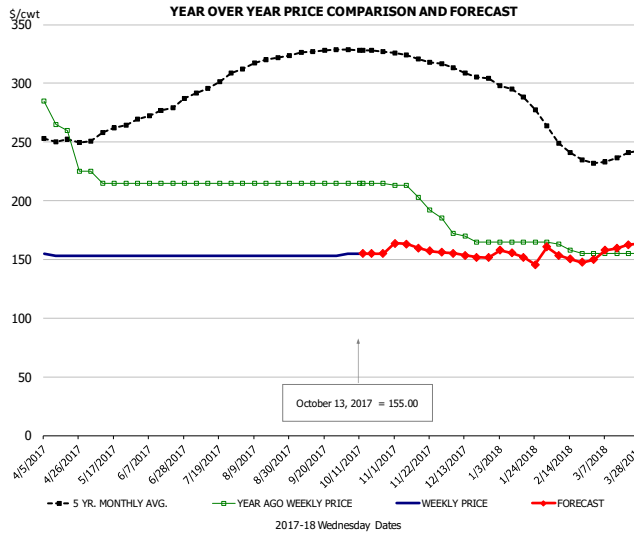
		Slaughter (million hd)	% CH.	Dressed Wt LBS	% CH.	Production RTC (Million lbs)	% CH.
Year Ago	8-Oct-16	4.078		24.40		99.5	
Last Week	7-Oct-17	3.971	-2.6%	26.52	8.7%	105.3	5.8%
Prev. Week	30-Sep-17	4.340		25.20		109.4	
Last Week	7-Oct-17	3.971	-8.5%	26.52	5.2%	105.3	-3.7%
YTD Last Year	8-Oct-16	171.2		24.84		4,252	
YTD This Year	7-Oct-17	165.3	-3.4%	25.38	2.2%	4,196	-1.3%

Quarterly History + Forecasts

Q1 2016	57.1		25.12		1,435	
Q2 2016	61.4		24.74		1,520	
Q3 2016	62.4		24.28		1,515	
Q4 2016	62.3		24.26		1,511	
Annual	243.3	Y/Y % CH.	24.60	Y/Y % CH.	5,981	Y/Y % CH.
Q1 2017	58.7	2.8%	25.33	0.8%	1,487	3.6%
Q2 2017	59.6	-3.1%	25.04	1.2%	1,491	-1.9%
Q3 2017	61.8	-1.0%	24.52	1.0%	1,515	0.0%
Q4 2017	61.7	-1.0%	24.48	0.9%	1,510	-0.1%
Annual	241.7	-0.6%	24.84	1.0%	6,003	0.4%
Q1 2018	58.1	-1.0%	25.56	0.9%	1,486	-0.1%
Q2 2018	59.0	-0.9%	25.29	1.0%	1,493	0.1%
Q3 2018	61.5	-0.5%	24.79	1.1%	1,524	0.6%
Q4 2018	62.3	1.0%	24.68	0.8%	1,537	1.8%
Annual	240.9	-0.3%	25.08	0.9%	6,039	0.6%



UB BONELESS-SKINLESS TURKEY BREAST, TOM, FRESH

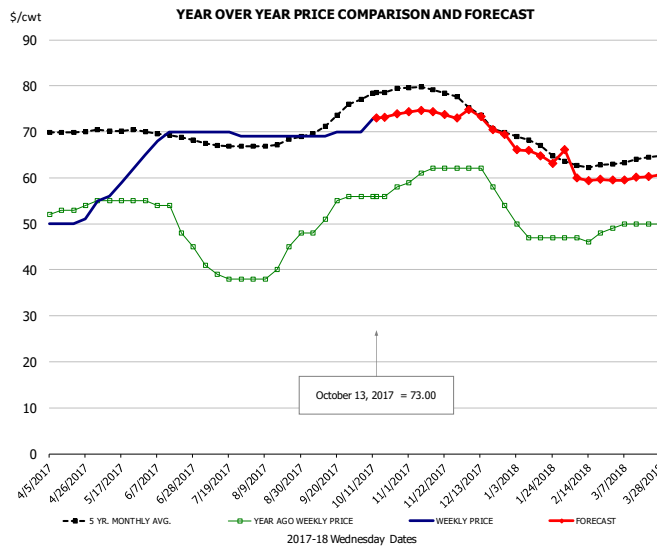


PRICE HISTORY AND FORECAST

- DOLLARS PER CWT -

	5-YR. AVG	YR. AGO	CURRENT	FORECAST	% CH.
Apr	249.84	258.75	153.50		-40.7%
May	259.01	217.50	153.00		-29.7%
Jun	274.35	215.00	153.00		-28.8%
Jul	296.56	215.00	153.00		-28.8%
Aug	317.03	215.00	153.00		-28.8%
Sep	326.40	215.00	153.00		-28.8%
4-Oct		215.00	155.00		-27.9%
13-Oct		215.00	155.00		-27.9%
25-Oct		215.00		154.85	-28.0%
Oct	328.29	215.00		155.00	-27.9%
Nov	321.34	201.20		160.00	-20.5%
Dec	309.00	168.00		153.00	-8.9%
Jan	290.07	165.00		153.00	-7.3%
Feb	247.05	160.25		153.00	-4.5%
Mar	234.65	155.00		160.00	3.2%

UB DRUMS, EAST, TOM, FROZEN

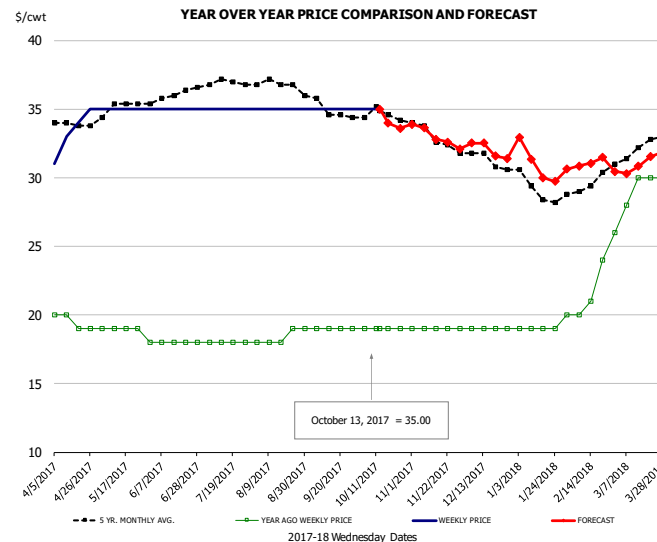


PRICE HISTORY AND FORECAST

- DOLLARS PER CWT -

	5-YR. AVG	YR. AGO	CURRENT	FORECAST	% CH.
Apr	69.88	53.00	50.25		-5.2%
May	70.24	55.00	59.40		8.0%
Jun	69.09	51.20	69.50		35.7%
Jul	67.00	39.00	69.75		78.8%
Aug	67.61	41.80	69.00		65.1%
Sep	71.25	52.50	69.50		32.4%
4-Oct		56.00	70.00		25.0%
13-Oct		56.00	73.00		30.4%
25-Oct		58.00		73.86	27.3%
Oct	77.90	56.50		73.00	29.2%
Nov	79.29	61.20		74.00	20.9%
Dec	73.33	59.00		72.00	22.0%
Jan	67.30	47.75		65.00	36.1%
Feb	62.80	47.00		60.00	27.7%
Mar	63.70	49.80		60.00	20.5%

MECH. SEP. TURKEY-FRESH-UNDER 20% FAT, SOME SKIN

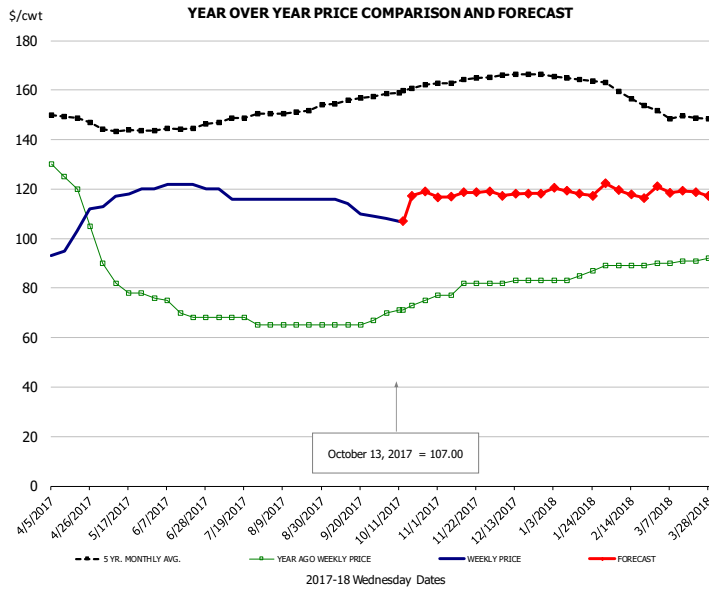


PRICE HISTORY AND FORECAST

- DOLLARS PER CWT -

	5-YR. AVG	YR. AGO	CURRENT	FORECAST	% CH.
Apr	33.81	19.50	33.25		70.5%
May	34.97	19.00	35.00		84.2%
Jun	35.90	18.00	35.00		94.4%
Jul	36.96	18.00	35.00		94.4%
Aug	36.93	18.40	35.00		90.2%
Sep	35.20	19.00	35.00		84.2%
4-Oct		19.00	35.00		84.2%
13-Oct		19.00	35.00		84.2%
25-Oct		19.00		33.59	76.8%
Oct	34.49	19.00		34.00	78.9%
Nov	33.20	19.00		33.00	73.7%
Dec	31.36	19.00		32.00	68.4%
Jan	29.15	19.00		31.00	63.2%
Feb	29.40	21.25		31.00	45.9%
Mar	31.99	28.80		31.00	7.6%

TURKEY MEAT - SCAPULA, FROZEN

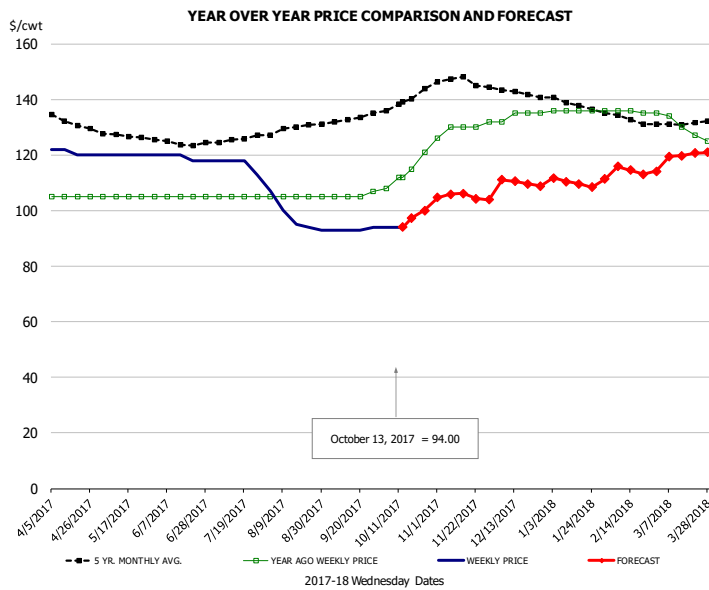


PRICE HISTORY AND FORECAST

- DOLLARS PER CWT -

	5-YR. AVG	YR. AGO	CURRENT	FORECAST	% CH.
Apr	148.06	120.00	100.75		-16.0%
May	143.70	82.00	117.60		43.4%
Jun	144.03	71.40	121.50		70.2%
Jul	148.17	67.25	117.00		74.0%
Aug	150.95	65.00	116.00		78.5%
Sep	155.53	65.50	112.25		71.4%
4-Oct		70.00	108.00		54.3%
13-Oct		71.00	107.00		50.7%
25-Oct		75.00		118.96	58.6%
Oct	159.91	72.25		117.00	61.9%
Nov	163.80	80.00		118.00	47.5%
Dec	166.07	82.75		118.00	42.6%
Jan	164.75	84.50		119.00	40.8%
Feb	158.20	89.00		119.00	33.7%
Mar	148.76	90.80		119.00	31.1%

UB TURKEY MEAT - THIGH, FRESH



PRICE HISTORY AND FORECAST

- DOLLARS PER CWT -

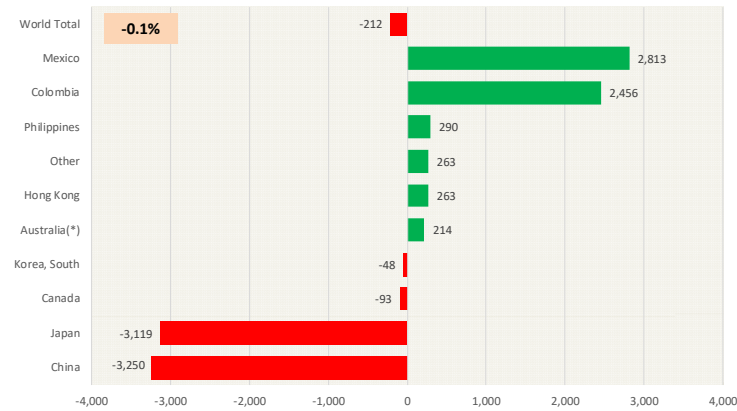
	5-YR. AVG	YR. AGO	CURRENT	FORECAST	% CH.
Apr	133.20	105.00	121.00		15.2%
May	127.48	105.00	120.00		14.3%
Jun	124.35	105.00	119.00		13.3%
Jul	125.08	105.00	116.75		11.2%
Aug	129.01	105.00	97.80		-6.9%
Sep	132.35	105.50	93.25		-11.6%
4-Oct		108.00	94.00		-13.0%
13-Oct		112.00	94.00		-16.1%
25-Oct		121.00		100.04	-17.3%
Oct	138.96	114.00		97.00	-14.9%
Nov	146.87	129.60		105.00	-19.0%
Dec	142.77	134.25		110.00	-18.1%
Jan	138.32	136.00		110.00	-19.1%
Feb	133.30	135.75		115.00	-15.3%
Mar	130.89	130.20		120.00	-7.8%

Special Monthly Update - Pork Exports

Y/Y Ch. in Aug. 17 vs. Aug 16 US Fr, Froz & Pres Pork Export Volume

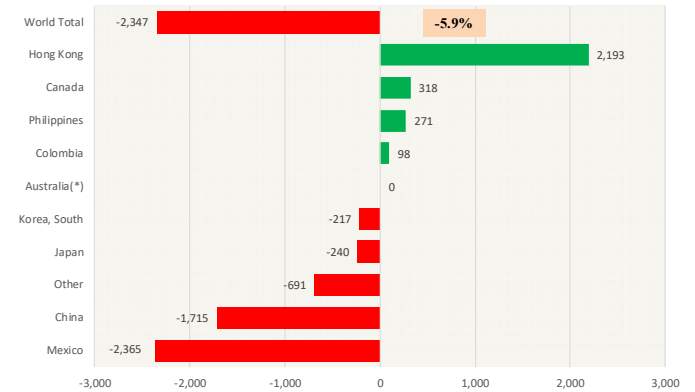
Source: USDA/FAS

Units: Metric Tons

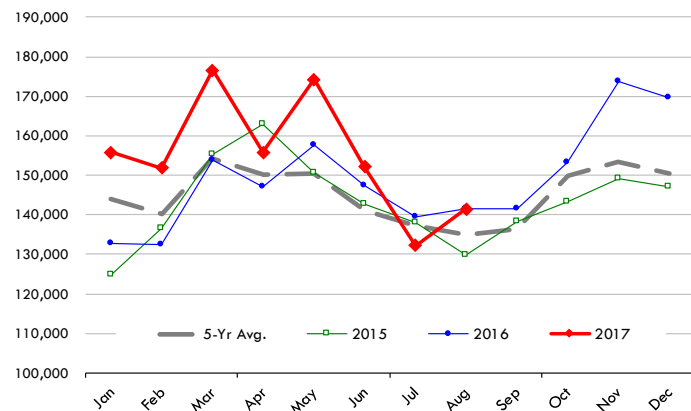

Y/Y Ch. in Aug. 17 vs. Aug 16 US Pork Variety Meat Exports

Source: USDA/FAS

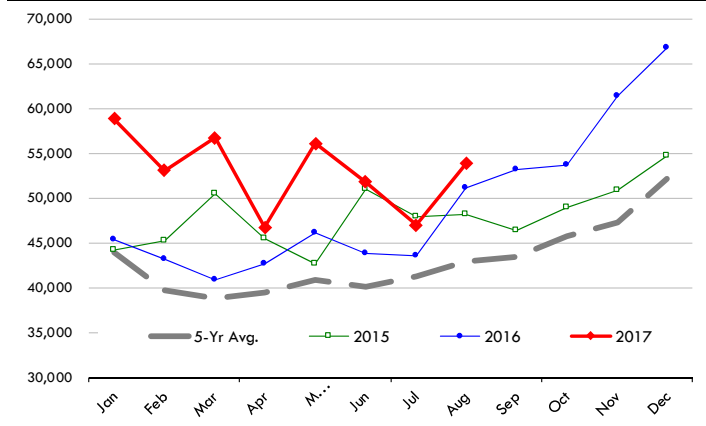
Units: Metric Tons


Quantity of US Exports of Fr/Frz/Cooked Pork: World Total

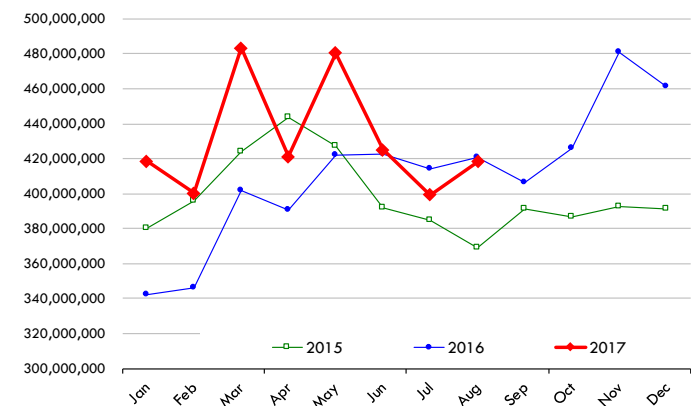
Source: USDA/FAS. Units: Metric Ton. Analysis by: Steiner Consulting (800.526.4612)


Quantity of US Exports of Fr/Frz/Cooked Pork: Mexico

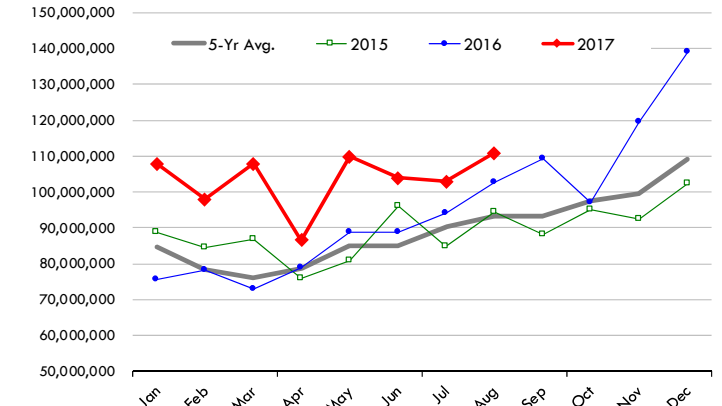
Source: USDA/FAS. Units: Metric Ton. Analysis by: Steiner Consulting (800.526.4612)


\$ Value of US Exports of Fr/Frz/Cooked Pork: World Total

Source: USDA/FAS. Units: US Dollars. Analysis by: Steiner Consulting (800.526.4612)


\$ Value of US Exports of Fr/Frz/Cooked Pork: Mexico

Source: USDA/FAS. Units: US Dollars. Analysis by: Steiner Consulting (800.526.4612)

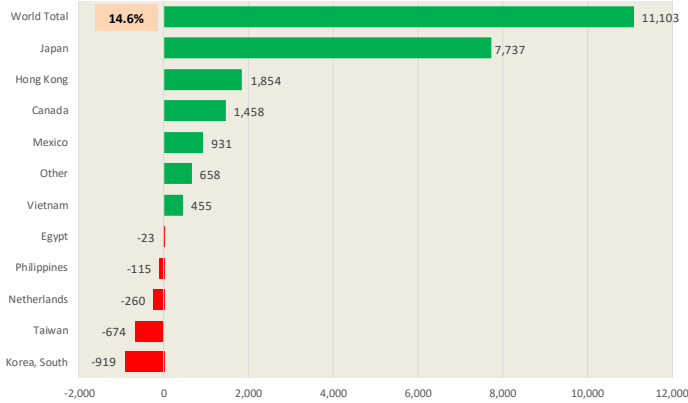


Special Monthly Update - Beef Exports

Y/Y Ch. in Aug. 17 vs. Aug 16 US Beef and Veal Export Volume

Source: USDA/FAS

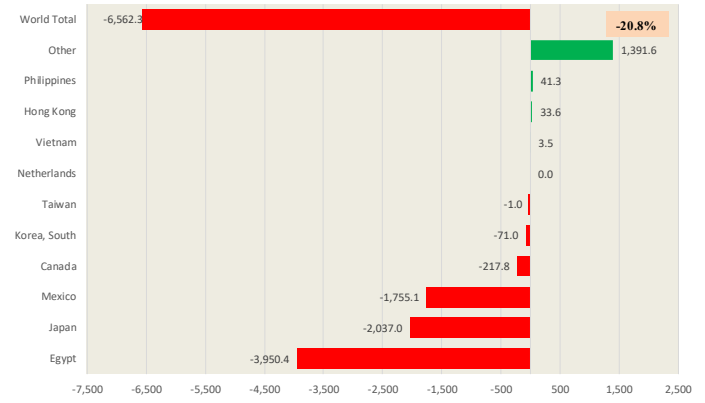
Units: Metric Tons



Y/Y Ch. in Aug. 17 vs. Aug 16 US Beef Variety Meat Exports

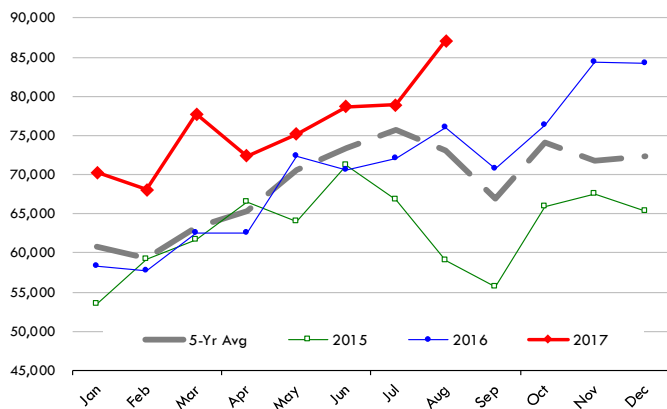
Source: USDA/FAS

Units: Metric Tons



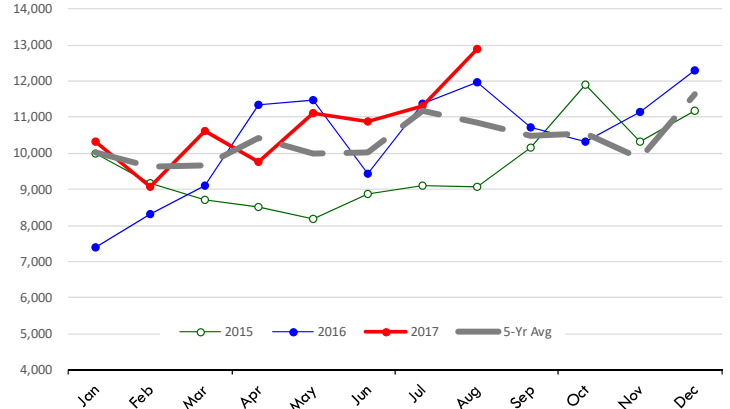
Quantity of US Exports of Fr/Frz/Pres Beef: World Total

Source: USDA/FAS. Units: Metric Ton. Analysis by: Steiner Consulting (800.526.4612)



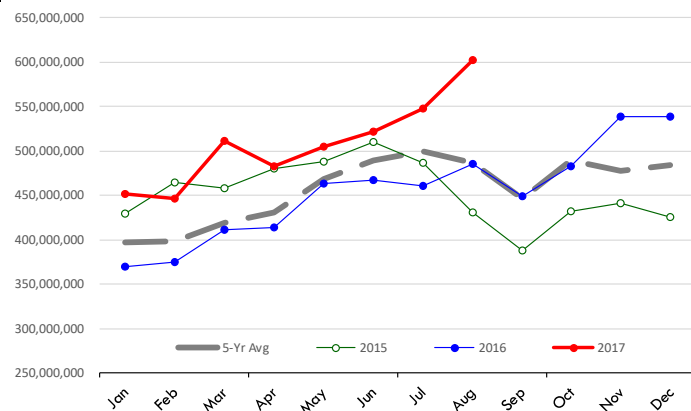
Quantity of US Exports of Fr/Frz/Pres Beef: Mexico

Source: USDA/FAS. Units: Metric Ton. Analysis by: Steiner Consulting (800.526.4612)



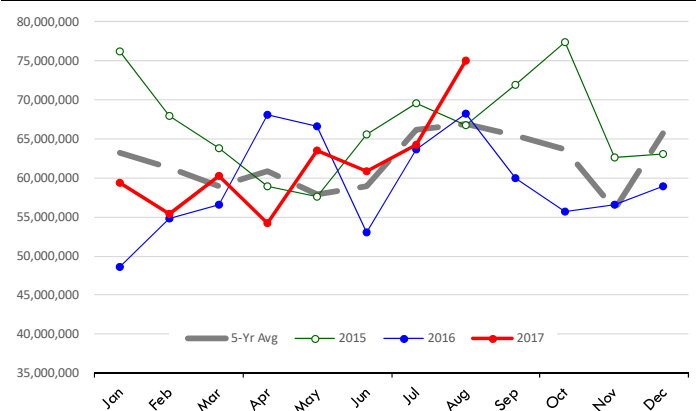
\$ Value of US Exports of Fr/Frz/Pres Beef: World Total

Source: USDA/FAS. Units: US Dollars. Analysis by: Steiner Consulting (800.526.4612)



\$ Value of US Exports of Fr/Frz/Pres Beef: Mexico

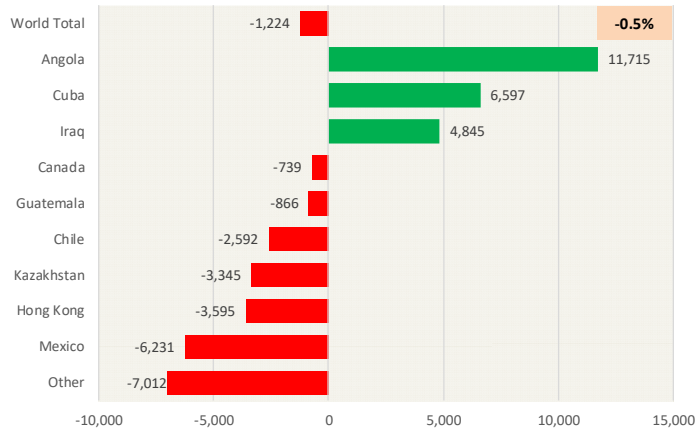
Source: USDA/FAS. Units: US Dollars. Analysis by: Steiner Consulting (800.526.4612)



Special Monthly Update - Chicken Exports

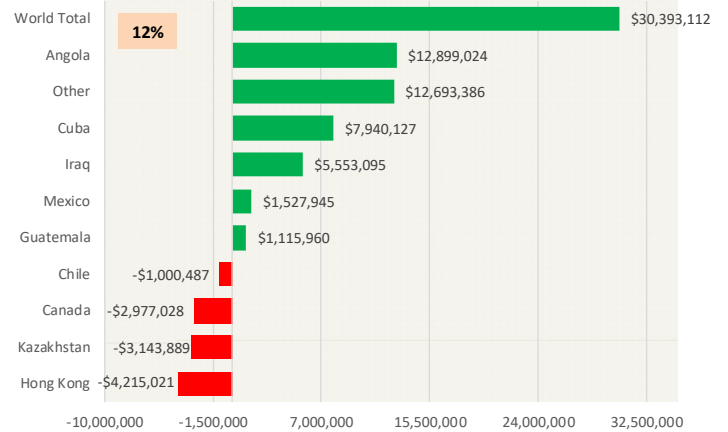
Y/Y Ch. in Aug. 17 vs. Aug 16 US Fresh/Frozen Broiler Meat Exports

Source: USDA/FAS Units: Metric Tons



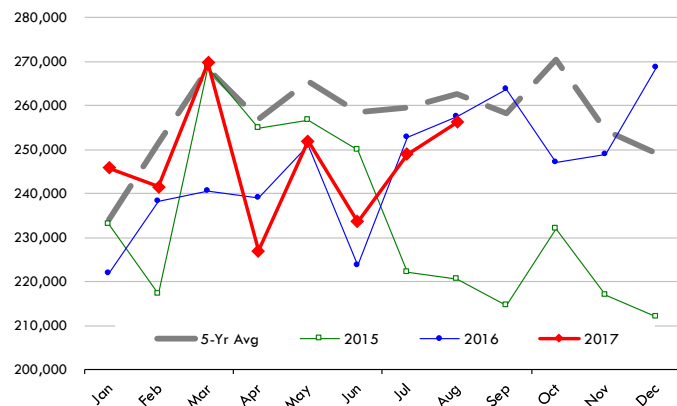
Y/Y Ch. in Aug. 17 vs. Aug 16 US Broiler Export Value (\$)

Source: USDA/FAS Units: US \$



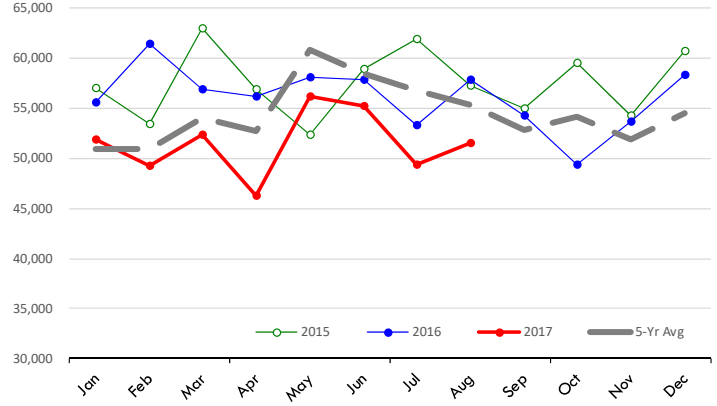
Quantity of US Exports of Fr/Frz Chicken: World Total

Source: USDA/FAS. Units: Metric Ton. Analysis by: Steiner Consulting (800.526.4612)



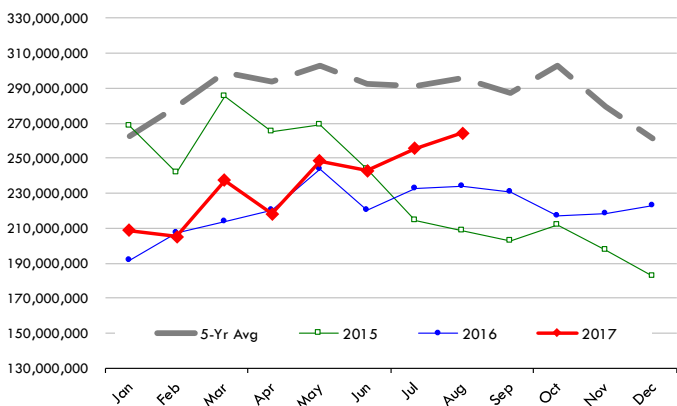
Quantity of US Exports of Fr/Frz Chicken: Mexico

Source: USDA/FAS. Units: Metric Ton. Analysis by: Steiner Consulting (800.526.4612)



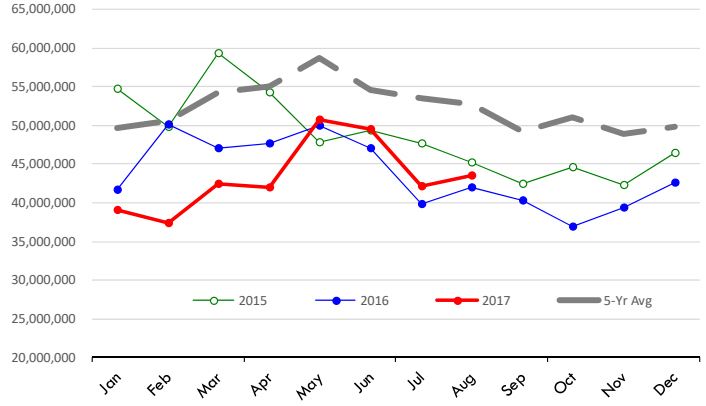
\$ Value of US Exports of Fr/Frz Chicken: World Total

Source: USDA/FAS. Units: US Dollar. Analysis by: Steiner Consulting (800.526.4612)



\$ Value of US Exports of Fr/Frz Chicken: Mexico

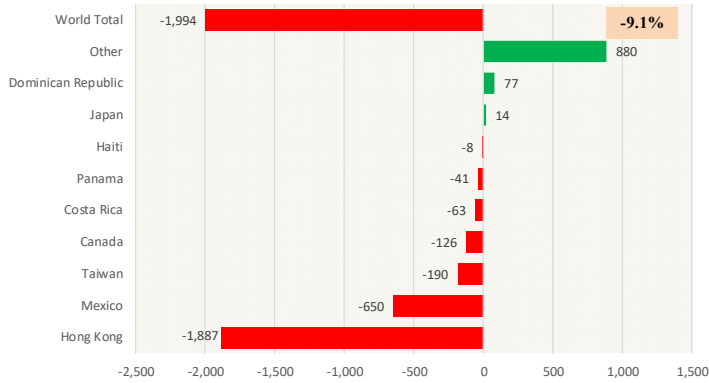
Source: USDA/FAS. Units: US Dollar. Analysis by: Steiner Consulting (800.526.4612)



Special Monthly Update - Turkey Exports

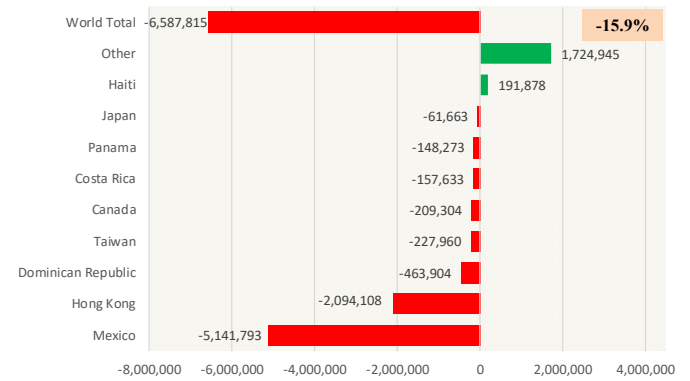
Y/Y Ch. in Aug. 17 vs. Aug 16 US Turkey Exports

Source: USDA/FAS Units: Metric Tons



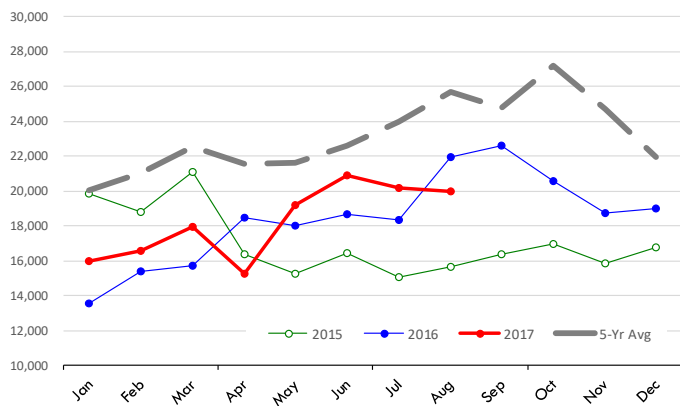
Y/Y Ch. in Aug. 17 vs. Aug 16 US Turkey Export Value (\$)

Source: USDA/FAS Units: US Dollars



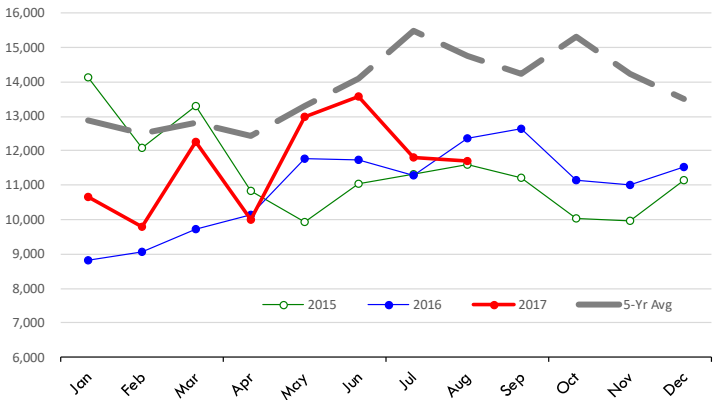
Quantity of US Exports of Fr/Frz Turkey: World Total

Source: USDA/FAS. Units: Metric Ton. Analysis by: Steiner Consulting (800.526.4612)



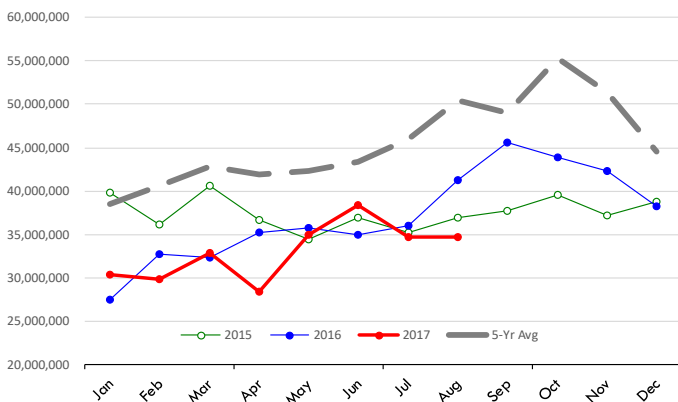
Quantity of US Exports of Fr/Frz Turkey: Mexico

Source: USDA/FAS. Units: Metric Ton. Analysis by: Steiner Consulting (800.526.4612)



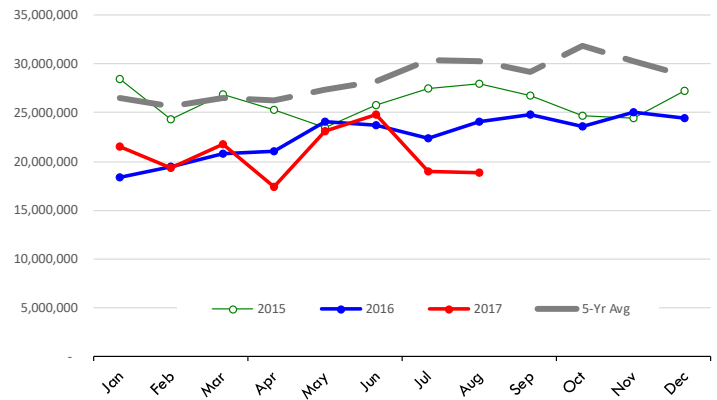
\$ Value of US Exports of Fr/Frz Turkey Export Value: World To

Source: USDA/FAS. Units: US Dollars. Analysis by: Steiner Consulting (800.526.4612)



\$ Value of US Exports of Fr/Frz Turkey: Mexico

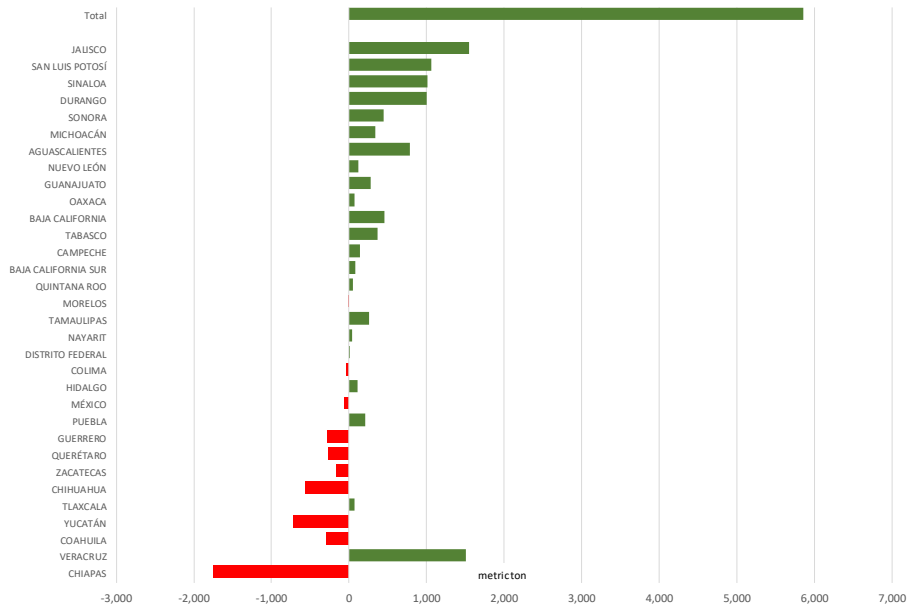
Source: USDA/FAS. Units: US Dollars. Analysis by: Steiner Consulting (800.526.4612)



Mexico Beef Production

CONTRIBUTION TO YEAR/YEAR CHANGE IN MEXICO BEEF PRODUCTION

METRIC TON. September 2017 VS. September 2016



Mexico Pork Prices

PRECIO PROMEDIO SEMANAL EN OBRADOR

(\$/kg)

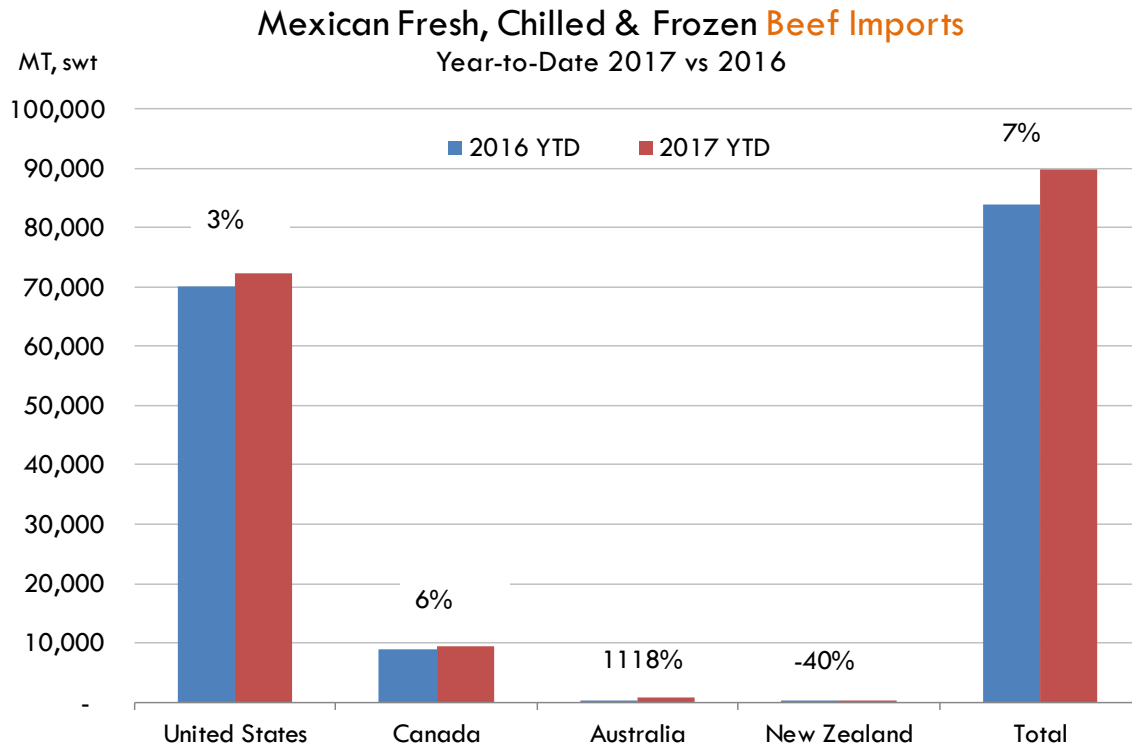
Semana 40 del 02-06 de octubre

	Ultimo	Anterior	Cambio
Supremo LAB Rastro	29.63	29.94	-0.31
Carne en canal	45.50	45.50	0.00
Cabeza	25.50	26.00	-0.50
Espaldilla	45.50	46.50	-1.00
Pecho	63.00	63.00	0.00
Entrecot	52.00	52.50	-0.50
Tocino	61.00	61.00	0.00
Pierna	57.00	56.50	0.50
Cuero	29.00	29.00	0.00

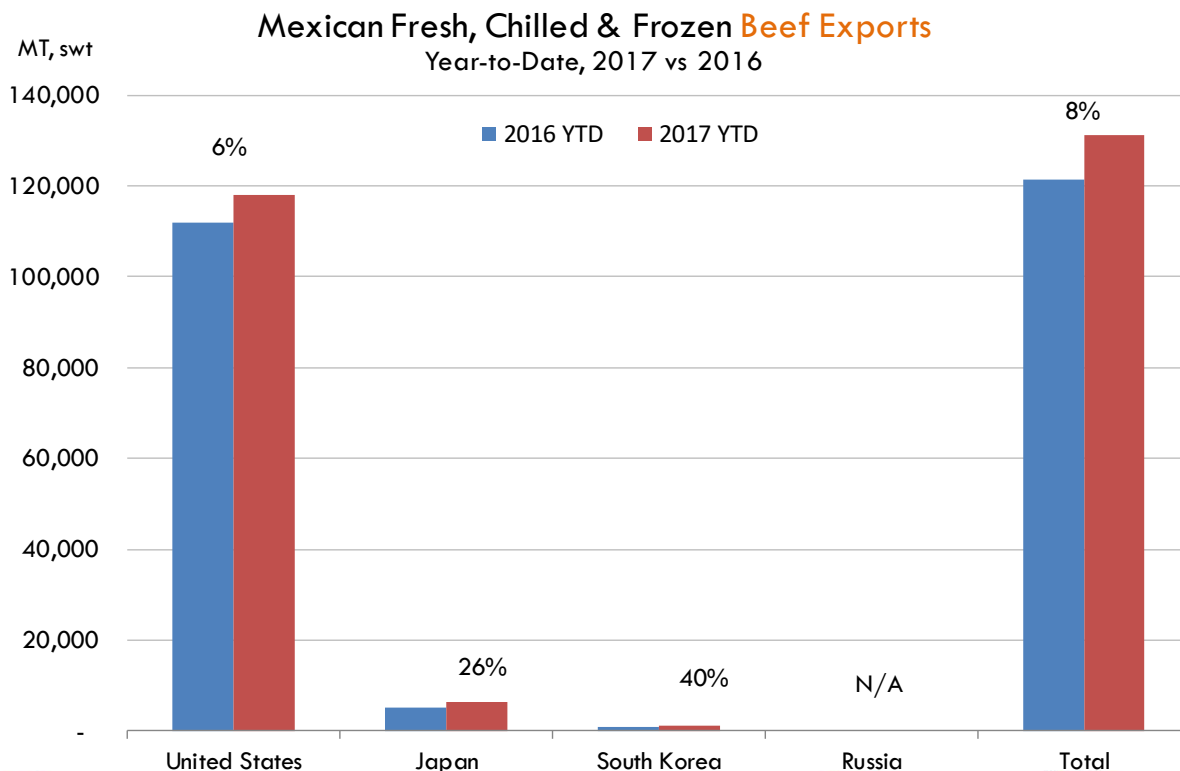
Fuente: SNIIM



Mexico Beef Imports



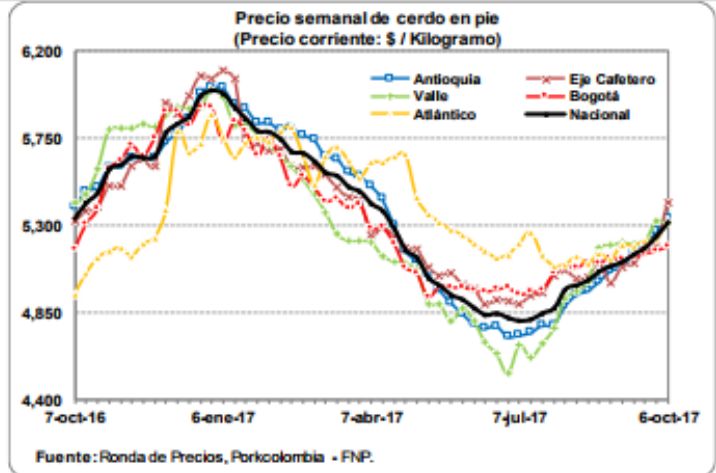
Mexico Beef Exports



Colombia Pork Prices

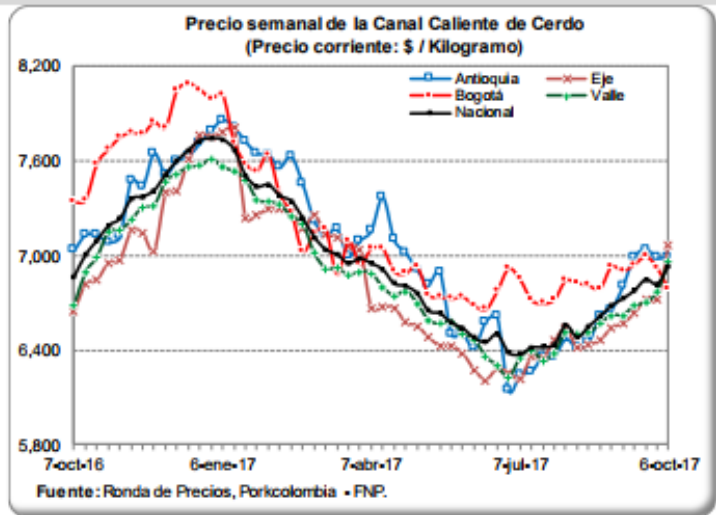
PRECIO SEMANAL DEL CERDO EN PIE (\$ / Kilogramo)

Ronda	Semana	Antioquia	Eje Cafetero	Valle	Bogotá	Caribe Norte	Nacional
28	14-jul-17	4,745	4,936	4,617	4,954	5,266	4,810
29	21-jul-17	4,783	4,949	4,687	4,966	5,146	4,843
30	28-jul-17	4,784	5,038	4,765	5,048	5,091	4,868
31	4-ago-17	4,881	5,068	4,920	5,085	5,097	4,967
32	11-ago-17	4,939	5,022	4,957	5,080	5,136	4,988
33	18-ago-17	4,962	5,031	5,008	5,112	5,101	5,014
34	25-ago-17	5,009	5,105	5,180	5,106	5,155	5,059
35	1-sep-17	5,063	5,003	5,198	5,129	5,121	5,086
36	8-sep-17	5,085	5,083	5,208	5,121	5,200	5,107
37	15-sep-17	5,150	5,103	5,205	5,132	5,191	5,148
38	22-sep-17	5,187	5,174	5,217	5,152	5,221	5,181
39	29-sep-17	5,267	5,191	5,317	5,168	5,231	5,243
40	6-oct-17	5,333	5,418	5,304	5,190	5,320	5,312



PRECIO SEMANAL DE CANAL DE CERDO (\$ / Kilogramo)














Ronda	Semana	Antioquia	Eje Cafetero	Bogotá	Valle	Nacional
28	14-jul-17	6,266	6,353	6,720	6,396	6,418
29	21-jul-17	6,358	6,349	6,698	6,334	6,422
30	28-jul-17	6,362	6,459	6,722	6,381	6,437
31	4-ago-17	6,471	6,535	6,843	6,510	6,560
32	11-ago-17	6,415	6,412	6,827	6,503	6,484
33	18-ago-17	6,451	6,431	6,812	6,507	6,552
34	25-ago-17	6,618	6,461	6,791	6,566	6,616
35	1-sep-17	6,658	6,537	6,932	6,619	6,682
36	8-sep-17	6,805	6,568	6,903	6,620	6,728
37	15-sep-17	6,992	6,631	6,943	6,678	6,778
38	22-sep-17	7,040	6,722	6,995	6,700	6,849
39	29-sep-17	6,987	6,718	6,924	6,769	6,820
40	6-oct-17	6,992	7,062	6,783	6,962	6,935



Global Pork Pricing Trends

World Hog Prices, Various Styles, Dressed Wt. & Live Wt.

Prices in US\$ Equivalent

			This Week	Prev. Wk.	Year Ago		
			6-Oct-17	29-Sep-17	7-Oct-16		% ch.
	US Lean Hog Carcass, IA/MN, (US\$/kg)	carcass wt.	1.14	1.05	1.03	↑	11%
	CAN Hog Carcass (US\$/kg)	carcass wt.	0.99	1.01	0.99	↑	0%
	AUS BAC Carcass 80-95kg (US\$/kg)	carcass wt.	3.41	3.43	4.05	↓	-16%
	EU-28 Slaughter Pigs, 70-87 kg, (US\$/kg)	carcass wt.	1.80	1.88	1.83	↓	-1%
	Denmark Slaughter Pigs, 70-87 kg, (US\$/kg)	carcass wt.	1.68	1.74	1.74	↓	-3%
	Germany Slaughter Pigs, 70-87 kg, (US\$/kg)	carcass wt.	1.82	1.89	1.86	↓	-2%
	Spain Slaughter Pigs, 70-87 kg, (US\$/kg)	carcass wt.	1.80	1.89	1.78	↑	1%
	France Slaughter Pigs, 70-87 kg, (US\$/kg)	carcass wt.	1.63	1.69	1.81	↓	-10%
	Argentina Live Hogs, (US\$/kg)	liveweight	1.13	1.13	1.11	↑	2%
	Brazil Live Hogs, (US\$/kg)	liveweight	1.20	1.20	1.21	↓	0%
	Chile Live Hogs, (US\$/kg)	liveweight	1.57	1.60	1.59	↓	-1%
	Mexico Live Pigs, (US\$/kg)	liveweight	1.56	1.58	1.56	↑	0%
	China Hog Carcass, (US\$/kg)	carcass wt.	3.24	3.24	3.62	↓	-10%



Miami, USA

2800 Biscayne Blvd. Suite 500
Miami, FL 33137
Tel: + 1 305 290 3720
Fax: +1 313 486 6784
E-mail: info@andesgt.com

Monterrey, Mexico

Av. Ignacio Morones Prieto 2805,
Of. 209 y 210, CP 64710
Monterrey, Nuevo Leon
Tel: +52 55 6264 1111
E-mail: info@andesgt.com

Company Summary

www.andesgt.com
Quality | Integrity | Trust

Colombia

Teléfono: +57 (1) 382 6784

